



MEDITE

Cancer Diagnostics

www.medite-group.com

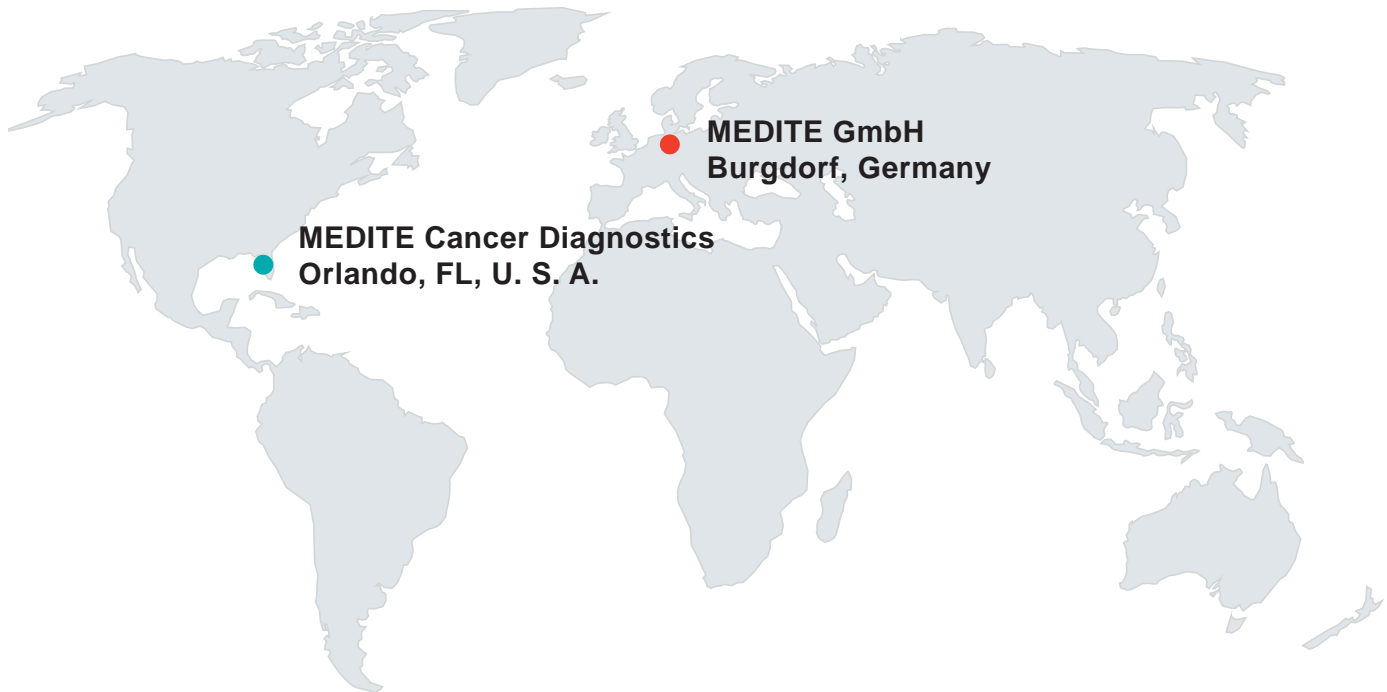


Product Program 2018

MEDITE Instruments and many Consumables are

Made
in
Germany

Our MEDITE Locations:



Your MEDITE Contact:



MEDITE GmbH • Germany

Wollenweberstrasse 12 • 31303 Burgdorf • Germany

info@medite.de • www.medite.de

Call us at **(+49) 51 36 / 88 84-0** for international orders



MEDITE CANCER DIAGNOSTICS • U. S. A.

4203 SW 34th Street • Orlando, Florida 32811 • U. S. A.

info@medite-group.com • www.medite-group.com

Call us at **(+1) 888-225-2950** for US orders

Customer ID

Your advantages as a MEDITE customer:

- One-stop shop for all products for your laboratory
- High quality equipment “Made in Germany”
- High quality consumables
- Wide range of accessories for our equipment
- Worldwide representation
- Service technicians available for all MEDITE equipment

Terms and Conditions (Excerpt):

- All previous catalogs and pricelists are no longer valid
- We take no liability for errors, changes and misprints
- Pictures and colors may vary
- Changes in prices and technology reserved
- General agreed delivery term is Incoterm (2010): Ex Works

Further information on page 75

Important Notice regarding Equipment Dimensions:

Throughout this catalog, dimensions of our equipment are given in millimeter. Please consider that in order for smoothly operating, additional space surrounding the devices is needed, e. g. for ventilation, power connection, and other tasks.


Your opinion matters to us:


Can't find a specific product? Would you like a more detailed description of one of the products in this catalogue? Tell us your suggestions and we will adapt to meet your needs.

Your **MEDITE** International Sales Team

CE Marking

The following symbols can be found in the descriptions of our products:

CE  CE Marking according to EU guideline 93/42/EWG – Medical Products

CE  CE Marking according to EU guideline 98/79/EWG – In-vitro Diagnostics

Copyright © 2018, MEDITE GmbH. All rights reserved.

Subject to change without prior notice. Pictures and colours may vary. Misprints and errors excepted.

© Registered trademark of MEDITE GmbH, MEDITE CANCER DIAGNOSTICS, Inc. unless otherwise stated

Printed in Germany 06/2018

	Staining, Coverslipping and Processing
8	Continuous Slide Stainer COT 20
10	Automatic Stainer TST 44
12	Stainer-Glass-Coverslipper Combination TCA 44-720
13	Film Coverslipper Twister
14	Glass Coverslipper RCM 9000
16	Rapid Tissue Processor TPC 15 Duo/Trio
	Embedding
18	Modular Tissue Embedding Center TES Valida
20	Modular Tissue Embedding Center TES 99
	Microtomy
22	Semi-Automatic Floor Standing Cryostat M630
23	Automatic Rotary Microtome A550
24	Semi-Automatic Rotary Microtome M530
25	Manual Rotary Microtome M380
	Cooling
26	Cooling Plate COP 30
26	Quick Cooling Unit TKF 22
27	Cooling Unit for Table Build In MKF 20
	Decalcifying and Drying
28	Ultrasonic Delcalcifier USE 33
29	Tissue Drying Oven TDO Sahara
30	Bench-Type Fume Absorber TAZ 19
	Stretching
31	Tissue Floatation Bath TFB 45
31	Tissue Floatation Bath TFB 55
32	Tissue Floatation Bath TFB 35
33	Slide Stretching Table OTS 40
	Small Equipment
34	Heated Forceps eCep
35	Electronic Engraving Pen EDS 20
	Recycling and Autopsy
36	Alcohol and Xylene Recycler MEDITE AX 10
36	Formalin Recycler MEDITE FR 10
37	Automatic Paraffin Filter L 15
37	Automatic Fomalin Neutralizer CLEARON 25
38	Formalin Preparation Automat PREFORMA 100
38	Medical Saw KSM 5000
	Laboratory Interior
39	Grossing Station PathStat
39	Bench-Type Fume Hood PathHood
40	Laboratory Furniture, Outlets, Safety Technology and Media Systems
	Information
2	Customer Service and Order Options
75	Terms and Conditions of Sale

	Embedding	
	Embedding Cassettes	42
	Biopsy Cassettes	42
	Mega Cassettes	43
	Stainless Steel Lid	43
	Embedding Molds	44
	Paraffin	45
	Marker	45
	Paraffin Remover	46
	Cryo-Spray	46
	Cryo Embedding Medium	46
	Filter Paper and Pads	46
	Processing Bags	47
	Tamper	47
	Filtercards for Centrifuges	47
	Sectioning	
	Microtome Blades TissueCut® and TissueCut® Plasma	48
	Trimming Blades and Handles	49
	Microtome Blades Feather®	49
	Staining	
	Staining Solutions Histology Premium and Standard	50
	Staining Solutions Cytology Premium and Standard	51
	Slide Staining Sets and Accessories	52
	Staining Containers, Glass and Racks	53
	Single-Use Pipettes	54
	Marker	54
	Tissue Marking Dye	54
	Microscope Slides Standard, Safeslide, Color Frosted Ends	55
	Microscope Slides StarFrost®, Tissueslide, Histobond®, SuperFrost® and Polysine®	56
	Coverslipping	
	CytoTape® Coverslipping Film	57
	Coverglass for Automatic and Standard	57
	Mounting Media pertex®, Mountex®, X-TRA-Kitt, Mount Quick	58
	Sprayfix Fixation Spray	58
	Solvents	
	Xylene	59
	X-TRA-Solv Xylene Substitute	59
	new decalc®	59
	Ethanol, 96% and 99%	60
	Isopropyl	60
	Decalcifying Solutions USERAPID and USEDECALC	60
	RDO® Rapid Decalcifier	61
	Formalin	61
	Formalin Neutralizer	61
	Digi-Timer	61
	Filing	
	Filing Boxes for Microscope Slides and Paraffin Blocks	62
	SAT 04 Slide Filing Maps	62
	Bio-Block Paraffin Block Filing Cabinet	62
	Slide Mailers	63
	Slide Collection Board	63
	Munich Map	64
	Slide Map	64
	Slide Box	64
	Slide Filing System HISTOFILE with Accessories	65
	Filing System MICROGLASS/MICROBLOCK with Accessories	66
	Cytology	
	SureThin® Processor	67
	SureThin® Gyn-Kits	67
	SureThin® Consumables	68
	SAFEPREP® Gyn-Kits	69
	SAFEPREP® Consumables	69
	Rovers® Cervex-Brush® Combi	71
	Zytobrush Plus	72
	Gyn-Brush, various types	72
	Eyrespatel F®	73
	PapCone®	73
	Szalay Spatula, Various Types	73
	Sprayfix Fixation Spray	73





Instruments

COT 20



The **COT 20** Linear Stainer with its approved technique of assembly line work offers invaluable benefits to histology and cytology laboratories that stain high amounts of tissue every day. Up to 1,000 stains can be performed per hour.

Considering the resting and drain time, the microscope slide baskets are transported from one staining trough to another. The times are adjustable from 20 seconds to 12 minutes and are the same for every bath. The draining reduces carry-over of the solvents.

16 of the total 23 staining stations are prepared for running water via a central water point. Each staining trough has a capacity of 250 ml. When using non-sensitive samples, the effectiveness of solutions can be increased by agitation, which can be switched on and off, on the front of the **COT 20**. Two storage containers are integrated in the working plate, each with a capacity for 10 slide baskets.

The flexibility of the tissue stainer **COT 20** offers a large number of variations. The use of all common staining solutions and intermedia, and the application of all staining procedures used in histology and cytology routine. Three different models are available to meet the requirements of all laboratories. The **COT 20** can either be connected to an existing ventilation system, or come with a carbon filter.

<i>Accessories</i>	<i>Purchasing Unit</i>	<i>Cat. No.</i>
Basekt for 20 slides, stainless steel	1 pc.	48-9020-00
Basket adapter for basket 48-9020-00	1 pc.	22-2000-00
Basket for 20 slides 48-9020-00 including adapter 22-2000-00	1 pc.	11-0054-00
Staining trough without flush	1 pc.	35-2002-00
Staining trough for running water	1 pc.	35-2001-00
Universal activated carbon for filter	Bucket of 5 kg	46-6040-00

Technical Data:

COT 20.000:	Model:	Standard with open side panels
	Start position:	Hopper for up to 4 slide baskets
	Number of stations:	23 inside the instrument 4 in hopper
	Staining capacity:	Interval of 2 min.: ca. 500 slides/hour Interval of 1 min.: ca. 1,000 slides/hour
	Basket capacity:	20 microscope slides, for direct use in MEDITE coverslippers
	Staining cycle:	Adjustable from 20 sec. to 12 min.
	Draining cycle:	Adjustable from 3 to 60 sec.
	Agitation:	Manual on – off
	Dimensions (W/D/H):	1,520 x 570 x 440 mm
	Weight:	55 kg
Cat. No. 03-2000-00	Power supply:	230V / 50 - 60Hz / 150VA
Cat. No. 03-2010-00	Power supply:	115V / 50 - 60Hz / 150VA

COT 20.200:	Model:	Closed model with closed side panels
	Number of stations:	23 inside the instrument
	Dimensions (W/D/H):	1,300 x 570 x 440 mm
Cat. No. 03-2020-00	Power supply:	230V / 50 - 60Hz / 150VA
Cat. No. 03-2030-00	Power supply:	115V / 50 - 60Hz / 150VA

For more technical data, please see **COT 20.000**

COT 20.400:	Model:	Closed model with integrated charcoal filter
	Dimensions (W/D/H):	1,300 x 700 x 440 mm
Cat. No. 03-2040-00	Power supply:	230V / 50 - 60Hz / 150VA
Cat. No. 03-2050-00	Power supply:	115V / 50 - 60Hz / 150VA

For more technical data, please see **COT 20.000**

TST 44



The programmable automatic stainer **TST 44** brings velocity and flexibility together. Continuous loading for baskets of 30 slides supports great efficiency. The 44 stations give the possibility of parallel processing different staining protocols without changing reagents, or outsourcing specific steps like deparaffinating.

The opportunity of parallel processing enables up to 500 slides to be processed during an hour. High quality results are constantly delivered. Fast protocols can overhaul slower protocols. The water inlet stops automatically when not needed.

The **TST 44** gives you ample flexibility for individual stains between your routine work.

<i>Accessories</i>	<i>Purchasing unit</i>	<i>Cat. No.</i>
Charcoal filter (disposable)	1 pc.	67-1001-00
Staining trough, volume: 360 ml	1 pc.	35-1001-00
Filterpads, length: 115 mm	Pack of 100 pcs.	46-6031-00
Basket for 30 slides, stainless steel, without hanger	1 pc.	17-5030-01
Basket for 20 slides, stainless steel, without hanger	1 pc.	48-9020-00
Basket for 30 slides, plastic, without hanger (not compatible with ACS 720)	1 pc.	28-1063-00
Basket for 30 slides, plastic, without hanger (not compatible with ACS 720)	1 pc.	28-1061-00
Basekt for 30 slides, plastic, with affixed hanger	1 pc.	24-1140-00
Basekt for 30 slides, plastic, with removable hanger	1 pc.	24-1146-00
Hanger for slide holder 17-5030-01	1 pc.	22-1001-00
Hanger for slide holder 28-1061-00, 28-1063-00	1 pc.	22-5007-02
Hanger for slide holder 48-9020-00	1 pc.	22-1002-00
Plastic block to reduce the volume of the staining trough	1 pc.	28-1008-00

Technical Data:

TST 44.000:	Max. number of staining protocols:	20, up to 12 for parallel operating
	Program steps:	40 per staining protocol
	Free choice for every step:	Bath, time (1 sec. to 59 min.)
	Drip collection:	Patented* MEDITE system for drip collection to avoid carry-over of fluids
	Number of stations:	44
	including:	4 loading stations 4 unloading stations 6 water baths 30 staining stations with agitation
	Bath volume:	360 ml, can be reduced to 260 ml
	Dimensions (W/D/H):	1,210 x 670 x 640 mm
	Weight:	118 kg
Cat. No. 04-4400-02	Power supply:	230V / 50 - 60Hz / 100VA
Cat. No. 04-4410-02		115V / 50 - 60Hz / 120VA

TST 44.200:	Number of stations:	44
	including:	4 loading stations 4 unloading stations 4 water baths 2 drying stations (temperature adjustable +40 °C to +90 °C) 30 staining stations with agitation
Cat. No. 04-4420-02	Power supply:	230V / 50 - 60Hz / 100VA
Cat. No. 04-4430-02		115V / 50 - 60Hz / 100VA

For more technical data, please see **TST 44.000**.

TST 44.000 C:	Number of stations:	44
	including:	4 loading stations 4 unloading stations 6 water baths 30 staining stations with agitation
	Transfer station:	Automatic transfer of slide baskets to the coverslipping machine ACS 720
Cat. No. 04-4720-03	Power supply:	230V / 50 - 60Hz / 120VA
Cat. No. 04-4730-03		115V / 50 - 60Hz / 100VA

For more technical data, please see **TST 44.000**.

TST 44.200 C:	Number of stations:	44
	including:	4 loading stations 4 unloading stations 4 water baths 2 drying stations (temperature adjustable +40 °C to +90 °C) 30 staining stations with agitation
	Transfer station:	Automatic transfer of slide baskets to the coverslipping machine ACS 720
Cat. No. 04-4740-03	Power supply:	230V / 50 - 60Hz / 100VA
Cat. No. 04-4755-03		115V / 50 - 60Hz / 100VA

For more technical data, please see **TST 44.000**.

TCA 44-720



Complete automation from the staining process to the finished tissue sample is available when combining the **TST 44 C** Stainer with the **ACS 720**. Together, the **TCA 44-720** Stainer-Glass-Coverslipper Combination brings flexibility, high throughput and maximizes quality and safety in the laboratory.

The combination features a transfer station. The manual changing of the slide holder from the stainer into the coverslipper after the staining process is finished, is no longer required. The elimination of this time-consuming task saves time and keeps the laboratory workflow running smoothly. Choose from various models for the best option for your laboratory.

Technical Data:

ACS 720:	Coverslipping time:	6 to 11 seconds per slide
	Dispensing volume:	30 - 150 µl
	Mounting medium container:	Bottle of 500 ml
	Microscope slide size:	26 x 76 mm
	Microscope slide thickness:	0.9 to 1.2 mm
	Microscope slide capacity:	150 pcs., continuous
	Coverglass size:	24 x 50, 55, 60 mm
	Coverglass thickness:	0.12 to 0.17 mm
	Coverglass container capacity:	Ca. 300 pcs.
	Dimensions (W/D/H):	630 x 670 x 640 mm
	Weight:	65 kg
Cat. No. 04-7200-04	Power supply:	100-230V / 50 - 60Hz / 90VA

For technical data of the **TST 44**, please see page 11.

<i>Accessories</i>	<i>Purchasing unit</i>	<i>Cat. No.</i>
Basket for 30 microscope slides with affixed hanger, plastic	1 pc.	24-1140-00
Hanger for basket 28-1063-00	1 pc.	22-5007-02
Charcoal filter (disposable)	1 pc.	67-1005-00
Case for coverglass 24 x 50 mm	1 pc.	24-1350-02
Case for coverglass 24 x 55 mm	1 pc.	24-1355-02
Case for coverglass 24 x 60 mm	1 pc.	24-1360-02
Purge cap for ACS 720	Pack of 10 pcs.	48-9084-00

Twister®

Design registered



With the Film Coverslipping Machine **Twister®**, **MEDITE** has created a device that offers high performance and reliable coverslipping with superior optical quality. The clear front doors allow full view of the process and easy access for the replacement of the coverslipping film. For the frequently accessed loading station, there is a cutout in the door to easily access the station. Quick and easy setting of the parameters (e. g. coverslipping length) is done per touch display.

The **Twister®** permits the use of 20 to 30 slide baskets capacity. Up to 1,200 slides per hour can be processed. Empty baskets and baskets with finished slides are automatically detected and transported to the output tray. The required amount of Xylene can be individually regulated, even during the coverslipping process. Furthermore, a collection reservoir ensures that excess Xylene can be safely collected and disposed of properly. For fume exhaust, the **Twister®** can be connected to an external ventilation system, or an integrated charcoal filter can be used.

MEDITE recommends the use of **CytoTape®** (p. 57) with the **Twister®**.

Technical Data:

Slide basket capacity:	20 or 30 pcs.
Coverslipping time:	Ca. 3 seconds
Volume xylene bottle:	500 ml
Cover tape:	23 mm width, 70 m length
Coverslipping length:	45 - 60 mm
Volume waste bottle:	100 ml
Dimensions (W/D/H):	730 x 310 x 545 mm
Weight:	65 kg
Cat. No. 03-5000-00	Power supply: 230V / 50 - 60Hz / 120VA
Cat. No. 03-5100-00	115V / 50 - 60Hz / 120VA

<i>Accessories</i>	<i>Purchasing unit</i>	<i>Cat. No.</i>
Basket for 20 microscope slides, with detachable hanger	1 pc.	34-5050-00
Basket for 30 microscope slides, with detachable hanger	1 pc.	24-1146-00
Cutter blades	Pack of 5 pcs.	34-5001-00
Charcoal filter (disposable)	1 pc.	67-1005-00
Waste bottle, 100 ml	1 pc.	34-5035-00
Xylene bottle, 500 ml	1 pc.	34-5040-00

RCM 9000



The **RCM 9000** coverslipping machine is compatible with most models of staining machines currently on the market. It has been designed to accept a wide range of commercially available mounting media.

A digital color screen eases setting the **RCM 9000**. It enables the user to remove processed microscope slides during the running process. It has the capacity of applying about 300 high quality glass coverslips per hour at a maximum speed of 10 seconds per slide. The coverslipping speed is adjustable and enables a flexible throughput.

The dispenser and pump assure consistent, bubble-free dispensing of the mounting media at the new higher speeds. The dispenser tip is automatically stored in xylene to prevent the needle from drying out. This silent operating unit is the best choice for modern histology laboratories.

Technical Data:

Coverslipping time:	12 to 20 seconds per slide Changeable 7-shift speed
Dispensing volume:	0.04 to 0.2 ml, adjustable
Mounting medium container:	Commercially available or MEDITE standard container
Coverglass size, standard:	24 x 40 / 50 / 55 / 60mm
Coverglass size, optional:	24 x 32 / 36 mm 25 x 40 / 50 / 55 / 60 mm
Dimensions (W/D/H):	500 x 540 x 640 mm
Weight:	59 kg
Cat No. 45-9000-00	Power supply: 230V / 50 - 60Hz / 460VA

<i>Accessories</i>	<i>Purchasing unit</i>	<i>Cat. No.</i>
Charcoal filter (disposable)	1 pc.	67-1003-00
Basket for 30 microscope slides, stainless steel	1 pc.	17-5030-01
Basket for 20 microscope slides, stainless steel	1 pc.	48-9020-00
Basket for 30 microscope slides, plastic	1 pc.	28-1061-00
Basket for 30 microscope slides, with detachable hanger, plastic	1 pc.	24-1146-00
Basket for 30 microscope slides, for automats of Leica, Sakura, Bavimed, manual staining	1 pc.	48-9030-00
Basket for 40 microscope slides, stainless steel, for staining automat Shandon Varistain	1 pc.	48-9040-00
Basket for 20 microscope slides, with hanger, for Sakura DRS 2000	1 pc.	24-0010-00
Storage for 20 slides	1 pc.	48-9051-00
Xylene container	1 pc.	48-9050-00
Basket holder for basket 48-9020-00	1 pc.	48-9021-00
Basket holder for basket 17-5030-01 and 48-9030-00	1 pc.	48-9031-00
Basket holder for basket 28-1061-00	1 pc.	17-5070-01
Basket holder for basket 48-9040-00	1 pc.	48-9041-00
Case for coverglass 24 x 40 mm	1 pc.	48-9063-00
Case for coverglass 24 x 50 mm	1 pc.	48-9064-00
Case for coverglass 24 x 55 mm	1 pc.	48-9065-00
Case for coverglass 24 x 60 mm	1 pc.	48-9066-00
Purge cap, oval	1 pc.	48-9083-00

TPC 15 Duo/Trio



The closed linear rapid Tissue Processing System **TPC 15** features 15 stations for parallel processing of two tissue baskets (**TPC 15 Duo**) or three tissue baskets (**TPC 15 Trio**) with different or identical programs in less than one hour.

The **TPC 15 Duo** with a capacity of 440 cassettes is capable of processing two different runs simultaneously and independently. The **TPC 15 Trio** allows the same technical features, but with a capacity of 660 cassettes.

Program interruption with access to the samples is possible. The system saves 15 different programs, allowing weekend, short protocols, paraffin recycling and basket cleaning programs. The **TPC 15** comes with a power back-up battery and a safety protocol, in case an interruption occurs. Thus the tissue is protected at all times.

Technical Data:

TPC Duo:	Capacity:	440 cassettes
	Programming:	18 program memory locations (15 + 3 fixed)
	Bath contents:	Ca. 2.3 l
	Time:	5 min. to 10 hrs.
	Temperature:	Paraffin: +40 °C to +70 °C Reagents: +40 °C to +50 °C Vacuum and pressure cycle
	Safety:	Emergency power supply in case of power failure, fume extraction with charcoal filter for the adsorption of solvent, fumes and connection to an exhaust facility, each station closed by a stainless-steel lid
	Dimensions (W/D/H):	1,290 x 715 x 730 mm
	Weight:	139 kg
Cat. No. 04-1540-01	Power supply:	230V / 50 - 60Hz / 870VA
Cat. No. 04-1550-01		115V / 50 - 60Hz / 950VA
<hr/>		
TPC Trio:	Capacity:	660 cassettes
	Programming:	24 program memory locations (20 + 4 fixed)
Cat. No. 04-1580-00	Power supply:	230V / 50 - 60Hz / 950VA
Cat. No. 04-1590-00		115V / 50 - 60Hz / 950VA

For more technical data, please see **TPC 15 Duo**.

<i>Accessories</i>	<i>Purchasing unit</i>	<i>Cat. No.</i>
Magnetic stirrer	1 pc.	51-1550-00
Charcoal filter (disposable)	1 pc.	67-1001-00
Universal activated carbon for filter	Bucket of 5 kg	46-6040-00
Basket for about 220 cassettes	1 pc.	11-1558-00
Basket for cassette organizing, including 3 inserts	1 pc.	11-1560-00
Insert for basket	1 pc.	11-1559-00
Solvent container	1 pc.	11-1550-00
Lid for solvent container	1 pc.	11-1551-00
Spare processing lid	1 pc.	11-1555-00

TES Valida

Design registered



The modular Paraffin Embedding Center **TES Valida** consists of three independent units that can each be operated by a touch screen controller. Together, they amount to an efficient system with a modern design. Round edges allow for ergonomic comfort. All surfaces are easy to clean.

The Cooling Unit offers a spacious stainless steel surface. Up to 100 paraffin blocks can be stored simultaneously. The temperature ranges from +15 °C down to -15 °C. For small laboratories, a compact version with a temperature range of +15 °C down to -10 °C is available.

The Dispenser Unit comes with a paraffin tank with a volume of 4.6 liters. With an adjustable lamp, every step can be individually illuminated. The Dispenser Unit also offers two containers for three forceps each on both sides of the tap. The flat top of the tap can be used for more storage space. The square peltier element is 40 mm², and can cool down to -5 °C. The bottom of the Dispenser Unit contains a basin that collects excess paraffin. A foot switch is included in the package.

The thermal unit features a spacious prewarming chamber for embedding molds in the upper half. The lower half contains the working plate, and a removable paraffin basin made of stainless steel. It is deep enough for storage of embedding cassettes and a wide range of baskets. The stainless steel cover allows for temperature stability.

<i>Accessories</i>	<i>Purchasing unit</i>	<i>Cat. No.</i>
Magnifier (4 diopters) for dispenser	1 pc.	46-0088-01
Foot switch for dispenser	1 pc.	11-8207-00
Forceps, tip diameter 1 mm	1 pc.	43-0011-00
Forceps, tip diameter 2 mm	1 pc.	43-0012-00
Forceps, tip diameter 4 mm	1 pc.	43-0014-00
Forceps, tip diameter 0,5 mm	1 pc.	43-0015-00
Heat protection for valve, for dispenser	1 pc.	37-0479-00

Technical Data:

Cooling Unit:	Dimensions overall (W/D/H):	500 x 600 x 345 mm
	Dimensions cooling plate (W/D/H):	500 x 264
	Temperature:	-15 °C to +15 °C
	Weight:	30 kg
Cat. No. 02-7741-00	Power supply:	230V / 50 - 60Hz / 320VA
Cat. No. 02-7751-00		115V / 50 - 60Hz / 320VA

Small Cooling Unit:	Dimensions overall (W/D/H):	360 x 600 x 345 mm
	Dimensions cooling plate (W/D/H):	360 x 264
	Temperature:	-10 °C to +15 °C
	Weight:	20 kg
Cat. No. 02-7742-00	Power supply:	230V / 50 - 60Hz / 170VA
Cat. No. 02-7752-00		115V / 50 - 60Hz / 180VA

Dispenser Unit:	Paraffin tank volume:	4.6 l
	Temperature paraffin tank:	+30 °C to +70 °C
	Temperature peltier element:	Ca. -5 °C
	Dimensions peltier element:	40 x 40 mm
	Dimensions overall (W/D/H):	360 x 600 x 345 mm
	Forceps heating:	2 depots for 3 forceps each
	Weight:	26 kg
Cat. No. 02-7725-00	Power supply:	230V / 50 - 60Hz / 430 VA
Cat. No. 02-7735-00		115V / 50 - 60Hz / 420 VA

Thermal Unit:	Dimensions overall (W/D/H):	360 x 600 x 345 mm
	Dimensions prewarming chamber (W/D/H):	300 x 210 x 115 mm
	Temperature prewarming chamber:	+30 °C to +70 °C
	Temperature paraffin basin:	+30 °C to +75 °C
	Weight:	20 kg
Cat. No. 02-7760-00	Power supply:	230V / 50 - 60Hz / 750VA
Cat. No. 02-7770-00		115V / 50 - 60Hz / 750VA

TES 99



The modular Paraffin Embedding Center **TES 99** consists of three independent units that can each be operated by a touch controller. Round edges allow for ergonomic comfort. All surfaces are sturdy and resistant to solvents, and therefore easy to clean.

The Cooling Unit features a large surface area made of stainless steel that can be cooled down to $-15\text{ }^{\circ}\text{C}$. Overall, up to 110 paraffin blocks can be stored. A compact version with a temperature range $+15\text{ }^{\circ}\text{C}$ down to $-10\text{ }^{\circ}\text{C}$ is offered to laboratories with reduced space availability.

The Dispenser Unit comes with a paraffin tank that has a volume of 3.5 liters. An adjustable lamp helps to illuminate the work area. Heated containers on both sides of the dispenser offer storage for 3 forceps each. The peltier element has a diameter of 40 mm, and can cool down to $-5\text{ }^{\circ}\text{C}$. The bottom of the Dispenser Unit contains a basin that collects excess paraffin. A foot switch is included in the package.

The thermal unit features a prewarming chamber for embedding molds in the upper section. The lower section contains the working plate, and a removable paraffin basin made of stainless steel. It is deep enough for storage of embedding cassettes and baskets. The stainless steel cover allows for temperature stability.

<i>Accessories</i>	<i>Purchasing unit</i>	<i>Cat. No.</i>
Magnifier (4 diopters) for dispenser	1 pc.	46-0088-00
Foot switch for dispenser	1 pc.	11-8207-00
Forceps, tip diameter 1 mm	1 pc.	43-0011-00
Forceps, tip diameter 2 mm	1 pc.	43-0012-00
Forceps, tip diameter 4 mm	1 pc.	43-0014-00
Forceps, tip diameter 0,5 mm	1 pc.	43-0015-00

Technical Data:

Cooling Unit:	Dimensions overall (W/D/H):	500 x 570 x 300 mm
	Dimensions cooling plate (W/D/H):	500 x 260
	Temperature:	-15 °C to +15 °C
	Weight:	25 kg
Cat. No. 02-9941-00	Power supply:	230V / 50 - 60Hz / 280VA
Cat. No. 02-9951-00		115V / 50 - 60Hz / 280VA
<hr/>		
Small Cooling Unit:	Dimensions overall (W/D/H):	360 x 570 x 300 mm
	Dimensions cooling plate (W/D/H):	360 x 260
	Temperature:	-10 °C to +15 °C
	Weight:	20 kg
Cat. No. 02-9942-00	Power supply:	230V / 50 - 60Hz / 180VA
Cat. No. 02-9952-00		115V / 50 - 60Hz / 150VA
<hr/>		
Dispenser Unit:	Volume paraffin tank:	3.5 l
	Temperature paraffin tank:	+30 °C to +70 °C
	Temperature peltier element:	Ca. -5 °C
	Dimensions peltier element:	40 mm Ø
	Dimensions overall (W/D/H):	360 x 570 x 300 mm
	Forceps heating:	2 depots for 3 forceps each
	Weight:	22 kg
Cat. No. 02-9925-00	Power supply:	230V / 50 - 60Hz / 350 VA
Cat. No. 02-9935-00		115V / 50 - 60Hz / 350 VA
<hr/>		
Thermal Unit:	Dimensions overall (W/D/H):	360 x 570 x 300 mm
	Dimensions prewarming chamber (W/D/H):	305 x 205 mm
	Temperature prewarming chamber:	+30 °C to +70 °C
	Temperature paraffin basin:	+30 °C to +75 °C
	Weight:	20 kg
Cat. No. 02-9960-00	Power supply:	230V / 50 - 60Hz / 320VA
Cat. No. 02-9970-00		115V / 50 - 60Hz / 750VA

Cryostat M630

Image may vary.



Integrated in the **Cryostat M630** is a highly precise semi-automatic Rotary Microtome. This microtome is intuitive in operation and operating temperatures are reached quickly. The ergonomical design allows operation in sitting and standing position. The individual settings are adjusted via two modern intuitive touch screens and both easily accessible from standing as well as sitting position.

The cryochamber is illuminated with LED lights and inside is space for up to 15 samples, including two peltier fast freezing locations. The cryochamber is closed with a window that is heated to avoid freezing which allows for continuous full visibility.

Specimen feed and sectioning range are adjusted by a highly precise stepping motor. UV disinfection is integrated as an option.

For manual or automated periodic defrosting, the **Cryostat M630** has a defrost water tank available.

Accessories see **Microtome M380**, p. 25.

Technical Data:

Microtome:

Sectioning range:	From 1 µm to 99 µm in 1 µm steps
Trimming range:	From 5 µm to 100 µm in 5 µm steps From 100 µm to 500 µm in 50 µm steps
Specimen retraction:	25 µm
Horizontal specimen feed:	30 mm
Vertical lift:	68 mm
Specimen fine orientation:	360° in Z and 8° in X and Y axes

Cryo Chamber:

Temperature range:	Down to -35 °C (+/- 1 °C)
Defrosting:	Automatic or manual, max. +6 °C
Fast freezing rail:	15 positions, 2 with peltier cooling Temperature ca. -20 °C below chamber temperature

Overall:

Dimensions (W/D/H):	1,200 x 650 x 840 mm
Weight:	Ca. 127 kg
Power supply:	230V / 50 - 60Hz / 220 VA

Cat. No. 04-5300-00



Microtome A550

The fully automatic **Microtome A550** guarantees the utmost reliability because of its high sectioning stability and precision, and offers various setting options for every laboratory. The ergonomically designed microtome can be operated with a handwheel or a foot switch.

The feature "Memory Positioning" allows moving to previously saved sectioning positions at the push of a button. The user can choose between five different modes. The sectioning rate is between 1 - 150 mm/s.

The sectioning range zone is adjustable to the individual sample size. Via a membrane keyboard, the settings can easily be entered. All required information is shown clearly on a digital display.

The front features a large-volume section waste tray which is also ergonomically shaped, resistant to xylene and can easily be detached for cleaning.

Object clamps and blade holders can be ordered separately. For further accessories, see **Microtome M380**, p. 25.

Technical Data:

Sectioning range:	0.25 μm to 2 μm in 0.25 μm steps 2 μm to μm in 0.5 μm steps 5 μm to 50 μm in 1 μm steps
Trimming range:	1 μm to 20 μm in 1 μm steps 20 μm to 100 μm in 5 μm steps 100 μm to 500 μm in 10 μm steps
Sectioning rate:	1 - 150 mm/s
Horizontal specimen feed:	30 mm
Vertical lift:	68 mm
Sectioning modes:	Manual, continuous, single, step stroke, permanent
Dimensions incl. tray (W/D/H):	530 x 430 x 310 mm
Weight:	Ca. 38 kg
Cat. No. 03-4100-01 Power supply:	100 - 240V / 50 - 60Hz

Microtome M530



The **Microtome M530** is the perfect choice for various demands in the clinical and research labs and a smart combination of high performance and ergonomical design. The ergonomically designed microtome can be operated with a handwheel that can be locked.

Its highly precise stepping motor technology enables safe and even sectioning of the paraffin-coated samples. The torsion-free design ensures perfect stability. The casing and section waste tray are xylene resistant.

Via a membrane keyboard, the settings can easily be entered. All required information is shown clearly on a digital display.

The front features a large-volume section waste tray which is also ergonomically shaped and can easily be detached for cleaning.

Object clamps and blade holders can be ordered separately. For further accessories, see **Microtome M380**, p. 25.

Technical Data:

	Sectioning range:	0.5 μm to 5 μm in 0.5 μm steps
	Trimming range:	5 μm to 100 μm in 5 μm steps 100 μm to 500 μm in 50 μm steps
	Horizontal specimen feed:	30 mm
	Vertical lift:	68 mm
	Dimensions incl. tray (W/D/H):	377 x 530 x 281 mm
	Weight:	Ca. 34 kg
Cat. No. 03-4000-01	Power supply:	100 - 240V / 50 - 60Hz

Microtome M380



The manual **Microtome M380** can be used without the need of a power supply. The torsion-free design ensures perfect stability. The smooth handwheel makes the operation simple and effective.

The front features a large-volume section waste tray which is also ergonomically shaped, and can easily be detached for cleaning. Object clamps and blade holders can be ordered separately.

Technical Data:

Sectioning range:	0.5 μm to 2 μm in 0.5 μm steps
Trimming range:	2 μm to 10 μm in 1 μm steps 10 μm to 20 μm in 2 μm steps 20 μm to 60 μm in 5 μm steps
Horizontal specimen feed:	30 mm
Vertical lift:	68 mm
Dimensions incl. tray (W/D/H):	530 x 377 x 281 mm
Cat. No. 03-4200-00 Weight:	Ca. 30 kg

<i>Accessories for Microtomes and Cryostat</i>	<i>Purchasing Unit</i>	<i>Cat. No.</i>
Universal cassette clamp, for standard cassettes, for instruments purchased 2015 and prior	1 pc.	24-3136-00
Universal cassette clamp, for standard cassettes, for instruments purchased 2016 and later	1 pc.	24-3232-00
Standard object clamp, with different inserts, for instruments purchased 2015 and prior	1 pc.	24-3030-00
Standard object clamp, with different inserts, for instruments purchased 2016 and later	1 pc.	24-3030-02
Object clamp for super mega cassettes, for instruments purchased 2015 and prior	1 pc.	24-3177-00
Object clamp for super mega cassettes, for instruments purchased 2016 and later	1 pc.	24-3177-01
Standard knife carrier	1 pc.	24-3500-00
Blade holder for microtome blades, low profile, for instruments purchased 2015 and prior	1 pc.	24-3131-00
Blade holder for microtome blades, low profile, for instruments purchased 2016 and later	1 pc.	24-3230-00
Blade holder for microtome blades, high profile, for instruments purchased 2015 and prior	1 pc.	24-3128-00
Blade holder for microtome blades, high profile, for instruments purchased 2016 and later	1 pc.	24-3457-00
Foot switch for Microtome A550, for instruments purchased 2015 and prior	1 pc.	24-3331-00
Foot switch for Microtome A550, for instruments purchased 2016 and later	1 pc.	24-3331-01
Object cooling for microtomes, for instruments purchased 2015 and prior	1 pc.	24-3155-00
Object cooling for microtomes, for instruments purchased 2016 and late	1 pc.	24-3155-01
Microtome brush for section stretching	1 pc.	46-0921-00
Microtome brush for cleaning	1 pc.	46-0922-00
Magnetic brush for cleaning and safe removal of blades	1 pc.	51-0046-00
Oil for slideways, small	1 bottle of 100 ml	40-2100-00
Oil for slideways, big	1 bottle of 1,000 ml	40-2200-00

COP 30



The Tissue Cooling Plate **COP 30** enables cooling of 60 to 100 embedding molds or paraffin blocks simultaneously. The environmental-friendly, quiet and powerful cooling unit ensures the maximum cooling temperature of $-15\text{ }^{\circ}\text{C}$ within a few minutes.

The cooling plate is made of stainless steel and the outer rim is heated to avoid condensation. Precise electronic temperature control ensures temperature consistency. Even with a large number of samples at once, the cooling plate keeps the temperature steady.

Technical Data:

Dimensions overall (W/D/H):	450 x 600 x 235 mm
Dimensions cooling plate (W/D/H):	440 x 300 x 47 mm
Temperature:	$-15\text{ }^{\circ}\text{C}$ to $+15\text{ }^{\circ}\text{C}$
Weight:	23 kg
Power supply:	230V / 50 - 60Hz / 300VA
	115V / 50 - 60Hz / 340VA

Cat. No. 02-1030-01

Cat. No. 02-1130-00

TKF 22



The Cooling Unit **TKF 22** is used for fast cooling of embedding molds and paraffin blocks in the histological laboratory. A seamless cooling tray made of stainless steel enables cooling of about 180 paraffin blocks simultaneously. The powerful cooling unit ensures the maximum temperature of $-35\text{ }^{\circ}\text{C}$ within a few minutes. The device comes with electronic temperature regulation for accuracy.

Technical Data:

Dimensions overall (W/D/H):	400 x 645 x 250 mm
Dimensions cooling plate (W/D/H):	300 x 327 x 40 mm
Temperature range:	$-35\text{ }^{\circ}\text{C}$ to $+15\text{ }^{\circ}\text{C}$
Weight:	23.5 kg
Power supply:	230V / 50 - 60Hz / 470VA
	115V / 50 - 60Hz / 450VA

Cat. No. 02-3000-00

Cat. No. 02-3100-00

Accessories	Purchasing Unit	Cat. No.
Stainless steel tray for 7 x 20 paraffin blocks	1 set	28-8242-00
Glass lid for energy saving	1 pc.	28-8241-00

MKF 20



The Cooling Unit **MKF 20** is designed for seamless installation in the work bench. The temperature regulation unit on the bottom can be rotated 90°, making the **MKF 20** suitable to fit in either longitudinal or laterally according to individual needs.

The powerful cooling unit reaches the maximum temperature of -10 °C on the stainless steel surface within a few minutes. Precise electronic temperature gauges ensure accurate temperature consistency for perfect adjustment to particular sectioning needs.

Technical Data:

Dimension cooling plate (W/D):	350 x 230 mm
Dimensions table excerpt (W/D):	330 x 210 mm
Installation depth:	320 mm
Temperature:	-10 °C to +15 °C
Weight:	15 kg
Cat. No. 02-2000-00	Power supply: 230V / 50 - 60Hz / 125VA
Cat. No. 02-2100-00	115V / 50 - 60Hz / 180VA

USE 33



By using the ultrasonic technology of the **USE 33**, crystalline structures of calcium phosphate, magnesium phosphate and calcium carbonate are fast and purposefully broken apart. This leads to quick and cell-protecting decalcification. Diffusion processes of fixatives, decalcification media and intermedia are significantly accelerated. Adjustable, sufficiently dimensioned cooling ensures utmost morphology.

Suitable sample inserts and jars are separately available.

Technical Data:

Process timer:	Programmable, 1 min. to 100 hrs.
Time switch:	Programmable: Start time, weekly program Three separate timing programs allow defining individual settings for each day or method
Output:	200 W
Bath volume:	Up to 13.5 l carrier fluid Sample inserts for 4, 9 and 49 sample jars with a volume of 20 to 800 ml
Dimensions (W/D/H):	450 x 600 x 350 mm
Temperature:	Ca. +16 °C to room temperature
Weight:	28 kg
Cat. No. 03-3300-00	Power supply: 230V / 50 - 60Hz / 300VA
Cat. No. 03-3310-00	115V / 50 - 60Hz / 400VA

<i>Accessories</i>	<i>Purchasing Unit</i>	<i>Cat. No.</i>
Sample Insert no. 1, incl. sampling jars, number of samples: 4	1 pc.	28-8252-00
Sampling jar for Sample Insert no. 1, number of samples: 4 Glass jar DURAN with spout, Ø 93 mm, H: 110 mm, jar volume: ca. 800 ml, max sampling size: 250 cm ³	1 pc.	46-1027-00
Sample Insert no. 2, incl. sampling jars, number of samples: 9	1 pc.	28-8253-00
Sampling jar for Sample Insert no. 2, number of samples: 9 Glass jar DURAN with spout, Ø 51 mm, H: 85 mm, jar volume: ca. 150 ml, max sampling size: 40 cm ³	1 pc.	46-1026-00
Sample Insert no. 3, incl. sampling jars, number of samples: 49	1 pc.	28-8254-00
Sampling jar for Sample Insert no. 3, number of samples: 49 Glass jar DURAN with spout, Ø 25 mm, H: 40 mm, jar volume: ca. 20 ml, max sampling size: 5 cm ³	1 pc.	46-1028-00
Lid for sample inserts	1 pc.	28-8250-00

TDO Sahara



The **TDO SAHARA** features digital temperature control and a built-in timer. The oven provides space for up to 48 thermoplastic slide holders, and the stainless steel racks and tray can easily be removed for cleaning.

The drying time is adjustable from 1 minute to 99 hours 59 minutes, or can be set for infinite operation. A digital temperature controller helps to set the drying temperature, and shows the current temperature inside the drying chamber during operation.

A large glass window on the front door gives full view in the drying chamber at any moment. This allows controlling the samples without interruption of the drying process, and prevents damages.

The **TDO SAHARA** is convectional. A disposable charcoal filter helps with solvent fumes.

Technical Data:

	Programming options:	Drying time from 1 min. to 99 hrs. 59 min., or infinite
	Dimensions overall (W/D/H):	445 x 368 x 480 mm
	Drying chamber (W/D/H):	414 x 273 x 280 mm
	Temperature:	+20 °C to +80 °C, adjustable in 1 °C steps
	Weight:	28 kg
Cat. No. 02-6800-00	Power supply:	230V / 50 - 60Hz / 1200VA
Cat. No. 02-6900-00		115V / 50 - 60Hz / 1100VA

Accessories	Purchasing Unit	Cat. No.
Charcoal filter (disposable)	1 pc.	67-1006-00

TAZ 19



The **TAZ 19** is a safe work station for fume adsorbing with down-draught extraction, especially suitable for microscope slide coverslipping, histological and pathological preparations, and filling and decanting of solvents. The continuously adjustable adsorbing capacity ensures perfect adaptation of the individual laboratory needs. The **TAZ 19** is available in three different versions, one with a connection to existing exhaust systems.

Technical Data:

TAZ 19.000/19.100	Filter:	Filter casing with a package of charcoal for xylene
	Dimensions overall (W/D/H):	620 x 485 x 405 mm
	Dimensions work plate (W/D/H):	590 x 310 x 40 mm
	Weight:	20 kg
Cat. No. 02-1900-00	Power supply:	230V / 50 - 60Hz / 160VA
Cat. No. 02-1910-00		115V / 50 - 60Hz / 160VA

TAZ 19.200/19.300	Filter:	Filter casing with adsorbent material for formaldehyde
Cat. No. 02-1920-00	Power supply:	230V / 50 - 60Hz / 160VA
Cat. No. 02-1930-00		115V / 50 - 60Hz / 160VA

For more technical data, please see **TAZ 19.000**.

TAZ 19.400/19.500	Filter:	Connection to existing exhaust
Cat. No. 02-1940-00	Power supply:	230V / 50 - 60Hz / 160VA
Cat. No. 02-1950-00		115V / 50 - 60Hz / 160VA

For more technical data, please see **TAZ 19.000**.

<i>Accessories</i>	<i>Purchasing Unit</i>	<i>Cat. No.</i>
Fume hood made of plexiglass	1 pc.	69-3500-00
Universal charcoal, for filter	Bucket of 5 kg	46-6040-00
Special charcoal for formaldehyde, for filter	Bucket of 5 kg	46-6041-00

TFB 45



The **TFB 45** is a round water bath, made of aluminum for safe and easy stretching and drying of tissue sections in histological and pathological laboratories. The bath's insides and rim are coated with black synthetic material to avoid corrosion. The rim is also heated and wide enough to store and dry microscope slides.

The **TFB 45** operates with a temperature range of +30 °C to +90 °C. A user-friendly temperature controller allows setting the desired temperature +/- 2 °C.

For further accessories, see **TFB 45**, p. 32.

Technical Data:

Dimensions:	
- Overall (Ø/H):	300 mm, 90 mm
- Water bath (Ø/H):	210 mm, 55 mm
- Rim (W):	45 mm
Bath volume:	1.5 l
Temperature:	+30 °C to +90 °C
Weight:	Ca. 2 kg
Cat. No. 01-4500-00	Power supply: 230V / 50 - 60Hz / 210VA
Cat. No. 01-4510-00	115V / 50 - 60Hz / 210VA

TFB 55



The round Tissue Floatation Bath **TFB 55** has an extra wide rim for storage and drying of microscope slides. The water bath is perfectly suitable for safe and easy stretching, and drying of sectioned specimen in histological and pathological laboratories.

The **TFB 55** operates with a temperature range of +30 °C to +90 °C. A user-friendly temperature controller allows setting the desired temperature +/- 2 °C.

Technical Data:

Dimensions:	
- Overall (Ø/H):	340 mm, 90 mm
- Water bath (Ø/H):	210 mm, 55 mm
- Rim (W):	55 mm
Bath volume:	1.5 l
Temperature:	+30 °C to +90 °C
Weight:	Ca. 2 kg
Cat. No. 01-5500-00	Power supply: 230V / 50 - 60Hz / 250VA
Cat. No. 01-5510-00	115V / 50 - 60Hz / 250VA

TFB 35



The Tissue Floation Bath **TFB 35** is a rectangular water bath with removable glass tray and compatible lid. It can be used in all fields of biomedical research and routine diagnostics.

To avoid corrosion, the casing is made of high quality stainless steel. The well-spaced and heated working plate is coated with robust black synthetic material. Paraffin sections are in good contrast to this material.

A temperature sensor plunges into the glass tray of the **TFB 35**, to ensure reliable temperature regulation. To insert or remove the glass tray, the sensor can easily be moved up and to the side. The water surface is illuminated but non-reflective with non-reflective LED, enabling applying the tissue sections in the best quality possible.

Technical Data:

TFB 35.000

Dimensions:	
- Overall (W/D/H):	430 x 365 x 160 mm
- Glass tray (W/D/H):	270 x 165 x 50 mm
- Work plate (W/D):	370 x 75 mm
Bath volume:	1.5 l
Temperature:	+30 °C to +55 °C
Weight:	7 kg
Cat. No. 01-3500-02	Power supply: 230V / 50 - 60Hz / 250VA
Cat. No. 01-3510-02	115V / 50 - 60Hz / 250VA

TFB 35.500

Dimensions:	
- Overall (W/D/H):	430 x 365 x 190 mm
- Glass tray (W/D/H):	270 x 165 x 80 mm
Bath volume:	2.8 l
Cat. No. 01-3550-02	Power supply: 230V / 50 - 60Hz / 250VA
Cat. No. 01-3560-02	115V / 50 - 60Hz / 250VA

For more technical data, please see **TFB 35.000**.

Accessories	Purchasing Unit	Cat. No.
Accessory kit for TFB 45 incl. thermometer and holder, lid	1 set	11-4500-00
Accessory kit for TFB 55 incl. thermometer and holder, lid	1 set	11-5500-00
Thermometer for TFB 45/55 0 - 100 °C	1 pc.	51-4551-00
Lid for TFB 45/55 made of aluminum	1 pc.	11-4540-00
Thermometer holder for TFB 45	1 pc.	11-4541-00
Thermometer holder for TFB 55	1 pc.	11-5541-00
Lid for TFB 35.000 made of aluminum	1 pc.	11-4550-01
Lid for TFB 35.500 made of aluminum	1 pc.	11-4550-10
Tray for TFB 35.000 made of glass, 1.5 liter	1 pc.	51-4552-00
Tray for TFB 35.500 made of glass, 2.8 liter	1 pc.	51-4553-00

OTS 40



Example

The five different models of the Stretching Table **OTS 40** are available for the individual requirements of different laboratories. The different sizes let you find a model that fits every work space.

The working plate is made of aluminum, coated in synthetic material, and 6 mm thick. This helps to quick heating to the desired working temperature and keeps it stable. On the front of the **OTS 40** is a temperature controller where the temperature can be set between +30 and +99 °C. The current temperature is shown next to it in a digital display during the whole operation.

The **OTS 40** series is well-established in the routine of laboratories. Decisive factors for choosing the **OTS 40** are the high temperature constancy and sturdy casing.

Technical Data:

OTS 40.1520	Dimensions (W/D/H):	150 x 200 x 80 mm
	Temperature:	+30 °C to +99 °C
	Weight:	1.7 kg
Cat. No. 01-4001-00	Power supply:	230V / 50 - 60Hz / 120VA
Cat. No. 01-4101-00		115V / 50 - 60Hz / 120VA
OTS 40.1540	Dimensions (W/D/H):	150 x 400 x 80 mm
	Temperature:	+30 °C to +99 °C
	Weight:	2.9 kg
Cat. No. 01-4002-00	Power supply:	230V / 50 - 60Hz / 260VA
Cat. No. 01-4102-00		115V / 50 - 60Hz / 300VA
OTS 40.2025	Dimensions (W/D/H):	200 x 250 x 80 mm
	Temperature:	+30 °C to +99 °C
	Weight:	2.4 kg
Cat. No. 01-4003-00	Power supply:	230V / 50 - 60Hz / 250VA
Cat. No. 01-4103-00		115V / 50 - 60Hz / 250VA
OTS 40.2530	Dimensions (W/D/H):	250 x 300 x 80 mm
	Temperature:	+30 °C to +99 °C
	Weight:	3.6 kg
Cat. No. 01-4004-00	Power supply:	230V / 50 - 60Hz / 350VA
Cat. No. 01-4104-00		115V / 50 - 60Hz / 350VA
OTS 40.3040	Dimensions (W/D/H):	300 x 400 x 80 mm
	Temperature:	+30 °C to +99 °C
	Weight:	5.4 kg
Cat. No. 01-4005-00	Power supply:	230V / 50 - 60Hz / 550VA
Cat. No. 01-4105-00		115V / 50 - 60Hz / 550VA

eCep



The Heated Forceps **eCep** allows easy and safe handling of histological paraffinated tissue sections without contamination by residue from other tissue. **The forceps heat only at the tip.** When working with the **eCep** there is no risk of danger due to hot grips.

The **eCep** comes with temperature control and heats to a temperature of between 65 °C and 75 °C. This prevents damage to the tissue from overheating.

The complete system consists of a control unit and one heated forceps in a choice of sizes. Other forceps sizes are available separately.

Technical Data:

eCep 1 mm	Forceps size:	1 mm
	Dimensions casing (W/D/H):	123 x 162 x 57 mm
	Temperature:	Up to +75 °C
	Weight:	1.1 kg
Cat. No. 43-0001-01	Power supply:	115/230V / 50 - 60Hz

eCep 2 mm	Forceps size:	2 mm
Cat. No. 43-0002-01		

For more technical data, please see **eCep 1 mm**.

eCep 4 mm	Forceps size:	4 mm
Cat. No. 43-0004-01		

For more technical data, please see **eCep 1 mm**.

eCep 0.5 mm	Forceps size:	0.5 mm
Cat. No. 43-0005-01		

For more technical data, please see **eCep 1 mm**.

<i>Accessories</i>	<i>Purchasing Unit</i>	<i>Cat. No.</i>
Single forceps, tip diameter 1 mm	1 pc.	43-0011-00
Single forceps, tip diameter 2 mm	1 pc.	43-0012-00
Single forceps, tip diameter 4 mm	1 pc.	43-0014-00
Single forceps, tip diameter 0,5 mm	1 pc.	43-0015-00
Control unit	1 pc.	43-0021-00

EDS 20



With the handy, electric engraving pen **EDS 20**, glass, metal or other material used in industry, science and technique, can be engraved, marked or otherwise inscripted.

The precise instrument with the aluminum casing and low weight of only 80 g automatically activates when it is picked up, and deactivates when put down.

For different applications, two different types are available.

Technical Data:

	Casing:	Anodized aluminum
	Drive shaft:	Stainless steel with special ball bearing
	Dimensions (L/Ø):	150 mm, 20 mm
	Weight:	80 g
Cat. No. 01-2000-00	Power supply:	115/230V / 50 - 60Hz / 65VA

<i>Accessories</i>	<i>Purchasing unit</i>	<i>Cat. No.</i>
Tip for glass, Ø 1.5 mm	Pack of 5 pcs.	46-4010-00
Tip for metal, Ø 2.5 mm	Pack of 5 pcs.	46-4020-00
Anti-glide pad, black rubber, dimensions (W/D/H): 230 x 160 x 5 mm	1 pc.	46-4040-00

MEDITE AX 10

To recycle xylene or xylene substitutes and alcohol, the fully automatic recycler **MEDITE AX 10** is an excellent choice. Up to 95% of used media can be regained. This brings significant savings to the laboratory while reducing the need for storage space.

The **MEDITE AX 10** is controlled by a user-friendly menu. Different protocols enable simple recycling of alcohol, xylene and xylene substitute. Connection to a waste water system or ventilation system is not required.

During the distillation process, residues are separated from the used solvent. The resulting product is pure solvent, ready to use. Optimum isolation prevents the outer surfaces from heating during the application.



Technical Data:

Distillation time:	Xylene: 25 - 30 minutes/liter Alcohol: 30 - 35 minutes/liter
Capacity:	8 liters
Dimensions (W/D/H):	400 x 650 x 1050 mm
Cat. No. 45-5500-00	Power supply: 220-240V / 50 - 60Hz

MEDITE FR 10

Used Formalin can be easily recycled with the useful **MEDITE FR 10**, a device that offers economic advantages as well as ecological benefits. For efficiently working laboratories, the **MEDITE FR 10** is a perfect addition.

With the **MEDITE FR 10**, used formalin can be treated to be reused fast and easy. Contaminating components, such as tissue, protein, water, etc. are removed during the recycling process.

The consumption of new Formalin is significantly reduced when using a recycling system like the **MEDITE FR 10**. Not only are the costs for the laboratory reduced, it also needs less space for storage, and the environmental pollution is lower.



Technical Data:

Distillation time:	30 - 35 minutes/liter
Capacity:	8 liters
Dimensions (W/D/H):	400 x 650 x 1050 mm
Cat. No. 45-5800-00	Power supply: 220-240V / 50 - 60Hz

L15



The Automatic Paraffin Filter **L15** is used in the histological laboratory for melting, filtering and recycling of paraffin. Not only does it help to reduce the paraffin storage amount, but it also saves time with the automation of the melting process. When used consistently, paraffin saving of up to 50% can be expected.

A special filter cartridge integrated in the **L15** retains residues. Depending on the way and amount of use, it lasts up to six months. The tank volume of about 15 liters ensures that enough paraffin is always on hand.

The **L15** is easily set with a touch panel with digital display. The temperature can be variably set up to 90 °C. The surfaces are sturdy and resistant against all common solvents used in histological laboratories. The safety valve prevents dripping paraffin, to avoid any harm to users or laboratory equipment.

Technical Data:

	Filter lifetime:	Ca. 3 to 6 months, depending on use
	Dimensions (W/D/H):	390 x 590 x 550 mm
	Weight:	19 kg
	Temperature:	Steplessly adjustable +20 °C to +90 °C
Cat. No. 02-1800-00	Power supply:	230V / 50 - 60Hz / 650VA
Cat. No. 02-1800-00		115V / 50 - 60Hz / 650VA

CLEARON 25



The user-friendly **CLEARON 25** helps with the environmental-friendly disposal of formalin waste. 25 liters can be neutralized within 30 minutes.

The device can be directly connected to laboratory work station. Excess formalin is automatically transported into the container, then neutralized and disposed. Each neutralization process can be checked by sampling the product before disposal.

Time-consuming manual collecting and transporting across the laboratory is no longer required by using the **CLEARON 25**. Daily, monthly and yearly protocols support the laboratory's quality management. Each process can be observed on the monitor. The device also gives visual and audible alarms to call attention to its process.

Technical Data:

	Humidity:	10% to 90%, non-condensing
	Ambient temperature:	20 °C to 40 °C
Cat. No. 45-5600-00	Power supply:	210-230V AC / 50 - 60Hz

PREFORMA 100

The **PREFORMA 100** is a fully automatic device for dispensing formalin in the laboratory. A silicon stopper prevents odors from polluting the air.

Concentrated formaldehyde is filled in. After adding water and a buffered solution, the formalin is ready to be dispensed directly from the device. This prevents any sediment of formalin residues.

The **PREFORMA 100** comes with a user-friendly software, making it easy to work with and boost efficiency. With visual and audible signals, it indicates when the formalin level is low.



Technical Data:

	Capacity:	50 or 100 liters
	Ambient temperature:	20 °C to 50 °C
	Dimensions (W/D/H):	650 x 860 x 1450 mm
	Weight:	145 kg
Cat. No. 45-5700-00	Power supply:	210 - 230AC / 8A / 50 - 60Hz

KSM 5000

The **KSM 5000** is an oscillating high-performance medical grade saw for pathology, orthopaedics and surgery with integrated suction and fine particles filter unit. The large disposable filter (7 liters) ensures easy handling of the vacuum filter system.

With its base with four wheels, long cables and tubes, the **KSM 5000** is flexible and easy to maneuver, as well as completely waterproof.



Technical Data:

	Saw Unit:	
	Oscillating time:	12,000 cycles/min
	Sound:	37 dB
	Weight:	1.4 kg
	Vacuum Unit:	
	Motor power:	750 W
	Vacuum capacity:	32 l/s
	Container (Ø):	225 mm
	Weight:	11.5 kg
Cat. No. 44-3800-00	Power supply:	230V / 50 - 60Hz / 1500VA

Accessories	Purchasing Unit	Cat. No.
Protecting hood	Pack of 10 pcs.	44-3026-00
Paper filters	Pack of 50 pcs.	44-3027-00
Saw blades, Ø 64 mm	Pack of 10 pcs.	44-3022-00
Saw blades, Ø 76 mm	Pack of 10 pcs.	44-3023-00
Segmented saw blades, Ø 51 mm	Pack of 10 pcs.	44-3024-00

PathStat



The six different models of the Grossing Station **PathStat** are made of high quality stainless steel and fit perfectly into the laboratory environment. This allows for more space for preparation of histological section and storage of accessories.

The Grossing Station comes with all necessary accessories already included. A smart magnet holder keeps them in comfortable reach without being disruptive. The work surface also includes a sink with hot and cold water connection.

Fumes that occur during the process are safely removed with backdraft and downdraft ventilation. Excess formalin can be directly disposed in a suitable container. The control elements are equipped with a sensor, eliminating any interruption for hand cleaning so the work process can continuously be pursued.

Technical Data:	Dimensions:	1500 x 750 x 2100 mm
	Power supply:	220-240V / 50 - 60Hz

<i>Models</i>	<i>Cat. No.</i>
Model 1: Grossing Station without exhaust fan; fixed height	45-1020-00
Model 2: Grossing Station with exhaust fan; fixed height	45-1030-00
Model 3: Grossing Station ductless; fixed height	45-1010-00
Model 4: Grossing Station without exhaust fan; height-adjustable	45-1060-00
Model 5: Grossing Station with exhaust fan; height-adjustable	45-1050-00
Model 6: Grossing Station ductless; height-adjustable	45-1040-00

PathHood



Made of high-quality stainless steel, the Bench-type Fume Hoods **PathHood** are the perfect addition for medical, biological and chemical laboratories. Down-draught extraction and an indicator for filter saturation are included to optimize the user's protection.

All models include a sink and a tap, making it suitable for coverslipping, decanting of solvents, and staining of histological and pathological material.

The ductless model utilizes activated carbon filtration, to absorb chemical vapors and fumes, recirculating clean air back to the laboratory. This also enables continuous energy savings.

All **PathHoods** have the dimensions of (W/D/H) 100 x 60 x 90 cm.

<i>Accessories</i>	<i>Cat. No.</i>
Model 1: Bench-type Fume Hood without exhaust fan	45-1120-00
Model 2: Bench-type Fume Hood with exhaust fan	45-1130-00
Model 3: Bench-type Fume Hood ductless	45-1110-00





Consumables

Embedding Cassettes

With attached lid, [can be torn off](#)



- Rectangular holes
- Attached lid that can be torn off

Minimum Purchase Quantity

10 boxes
Box of 1,000 pcs. (3.15 kg/nt. wt.)

Color	Cat. No.
White	46-1100-00
Blue	46-1101-00
Yellow	46-1102-00
Green	46-1103-00
Pink	46-1106-00

Different colors upon request

Embedding Cassettes

With lid, [with hinges](#)



- Rectangular holes
- Lid with hinges

Minimum Purchase Quantity

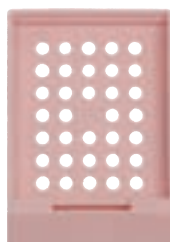
20 boxes
Box of 500 pcs. (1.57 kg/nt. wt.)

Color	Cat. No.
White	46-1120-00
Light Blue	46-1128-00
Yellow	46-1122-00
Green	46-1123-00
Pink	46-1124-00

Different colors upon request

Embedding Cassettes

Without lid



- Round holes
- Matching stainless steel lid available (Cat. No. 47-1050-01)

Minimum Purchase Quantity

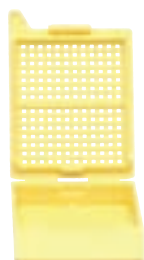
10 boxes
Box of 1,000 pcs. (2.44 kg/nt. wt.)

Color	Cat. No.
White	47-1300-00
Blue	47-1301-00
Yellow	47-1302-00
Green	47-1303-00
Pink	47-1306-00

Different colors upon request

Biopsy Cassettes

With attached lid, [can be torn off](#)



- Square holes
- Attached lid that can be torn off

Minimum Purchase Quantity

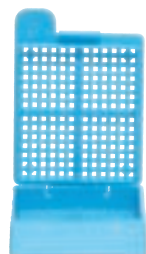
10 boxes
Box of 1,000 pcs. (3.6 kg/nt. wt.)

Color	Cat. No.
White	46-1700-00
Blue	46-1701-00
Yellow	46-1702-00
Green	46-1703-00
Pink	46-1706-00

Different colors upon request

Biopsy Cassettes

With lid, [with hinges](#)



- Square holes
- Lid with hinges

Minimum Purchase Quantity

20 boxes
Box of 500 pcs. (1.9 kg/nt. wt.)

Color	Cat. No.
White	47-1250-00
Blue	47-1255-00
Yellow	47-1252-00
Green	47-1253-00
Pink	47-1254-00

Different colors upon request

Biopsy Cassettes Mesh

For lung and needle biopsies, with mesh and lid



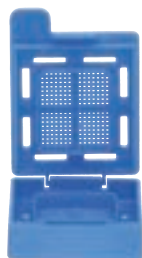
- With extra fine mesh for very small biopsies
- No need for pads or paper
- Attached lid that can be torn off

Minimum Purchase Quantity	Color	Cat. No.
1 box	White	48-6319-00
Box of 500 pcs. (0.9 kg/nt. wt.)	Blue	48-6326-00
	Yellow	48-6318-00
	Green	48-6325-00
	Pink	48-6327-00

Different colors upon request

Bionet Cassettes

Fine-mesh, with lid



- Square holes
- Fine-mesh
- Attached lid that can be torn off

Minimum Purchase Quantity	Color	Cat. No.
1 box	White	46-1403-00
Box of 500 pcs. (0.9 kg/nt. wt.)	Blue	46-1401-00
	Yellow	46-1402-00
	Green	46-1400-00
	Pink	46-1406-00

Different color upon request

Mega Cassette

CE IVD



- Inner dimensions (W/D/H): 30 x 25 x 10 mm
- Outer dimensions (W/D/H): 40 x 28 x 12 mm

Minimum Purchase Quantity	Color	Cat. No.
1 box	White	47-1150-00
Box of 750 pcs. (3.2 kg/nt. wt.)		

Super Mega Cassettes

CE IVD



- Attached plastic lid
- Inner dimensions (W/D/H): 62 x 48 x 14 mm
- Outer dimensions (W/D/H): 73 x 53 x 16 mm

Minimum Purchase Quantity	Color	Cat. No.
1 box	White	47-1155-00
Box of 200 pcs. (4.8 kg/netto)		

Stainless Steel Lid

- Compatible to embedding cassettes without lid, Cat. No. 47-1300-00 to 47-1306-00 (p. 8)



Minimum Purchase Quantity	Material	Cat. No.
2 bags	Stainless Steel	47-1050-01
Bag of 25 pcs. (0.6 kg/nt. wt.)		

Embedding Molds Standard

Re-usable

- Made of stainless steel
- Compatible with most embedding cassettes
- Can be re-used after cleaning



Minimum Purchase Quantity	Size	Cat. No.
1 box	7 x 7 x 7 mm	48-6320-00
Box of 10 pcs. (0.8 kg/nt. wt.)	15 x 15 x 7 mm	48-6321-00
	24 x 24 x 7 mm	48-6322-00
	30 x 24 x 7 mm	48-6324-00
	37 x 24 x 7 mm	48-6323-00

Embedding Molds Premium

Re-usable

- Compatible with most embedding cassettes
- Can be re-used after cleaning



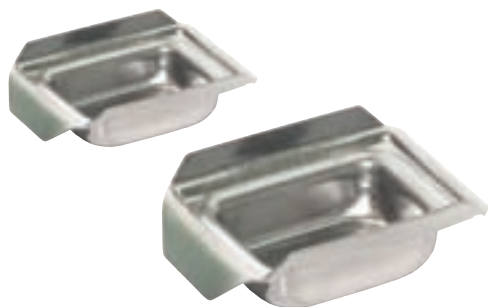
Minimum Purchase Quantity	Size	Cat. No.
1 box	7 x 7 x 5 mm	47-2001-00
Box of 12 pcs. (0.1 kg/nt. wt.)	15 x 15 x 5 mm	47-2002-00
	24 x 24 x 5 mm	47-2003-00
	30 x 24 x 5 mm	47-2004-00
	37 x 24 x 5 mm	47-2005-00

Embedding Molds for Mega and Super Mega Cassettes

Re-usable

- Can be re-used after cleaning
- Dimensions for Mega Cassettes (W/D/H): 33 x 24 x 12 mm
- Dimensions for Super Mega Cassettes (W/D/H): 65 x 45 x 15 mm

CE IVD



Minimum Purchase Quantity	Size	Cat. No.
1 box	For Mega Cassettes	47-2010-00
Box of 6 pcs. (0.06 kg/nt. wt.)		
1 box	For Super Mega Cassettes	47-2015-00
Box of 10 pcs. (0.27 kg/nt. wt.)		

Embedding Molds Plastic

Disposable

- Compatible with most embedding cassettes



Minimum Purchase Quantity	Size	Cat. No.
1 box	7 x 7 x 5 mm	48-6301-00
Box of 500 pcs. (ca. 1.0 kg/nt. wt.)	17 x 17 x 5 mm	48-6302-00
	25 x 25 x 5 mm	48-6303-00
	32 x 25 x 5 mm	48-6304-00
	40 x 25 x 5 mm	48-6305-00
1 box	30 x 20 x 12 mm	48-6306-00
Box of 500 pcs. (1.5 kg/nt. wt.)		

Embedding Molds Cryomold

Disposable

- Embedding molds for one-time use
- Made of flexible clear PVC
- For preparation of consistently formed paraffin blocks with a flat surface
- Perfect for preparing specimen for cryo sections



Minimum Purchase Quantity	Size	Cat. No.
1 box	25 x 20 x 5 mm (Standard)	48-6310-00
Box of 100 pcs.	15 x 15 x 5 mm (Intermediate)	48-6313-00
	10 x 10 x 5 mm (Biopsy)	48-6314-00

MEDITE PURE™ Paraffin

For Infiltration and Embedding

- Innovative paraffin formula with multi-cleaned paraffin, without polymers or other toxic substances
- Advantages: High-gloss, transparent surface for spotting small biopsies, for use with all intermedia
- Excellent characteristics in application, embedding and sectioning
- Perfect for use in Tissue Embedding Centers
- Melting point: 56 °C to 58 °C



Minimum Purchase Quantity	Size	Cat. No.
1 bag	Bag of 25 kg	40-0022-00
1 box	Box of 12.5 kg	40-0021-00
1 box	Box of 5 x 2 kg	40-0020-00

Marker

For labelling cassettes and microscope slides

- Fiber pencil with permanent black ink
- Resistant against acids, alcohol, xylene and other solvents
- For labelling tissue embedding cassettes and microscope slides
- Solvent-free, odorless and waterbased, therefore no early drying out



Minimum Purchase Quantity	Color	Cat. No.
1 box	Black	47-1070-00
Box of 12 pcs. (0.12 kg/nt. wt.)		

Paraffin Remover

Cleaning Solution

- Including spray pump for convenient proportioning
- Perfect alternative to xylene or toluene for removal of paraffin residues
- Consists of a mixture of oils that is applied in laboratories as reliable detergent with lowest pollutant emission



Minimum Purchase Quantity	Size	Cat. No.
1 box	250 ml	41-5600-00
Box of 5 bottles + 2 spray pumps (1 bottle of 0.24 kg/nt. wt.)		

Cryo-Spray

Freeze Spray



- Spray for histology without fluorochlorocarbons
- For freezing of fresh tissue for cryostat sectioning, and for cooling of wax embedded tissue for paraffin sectioning
- Optimal freeze control by special spray nozzle (included)

Minimum Purchase Quantity	Size	Cat. No.
1 box	200 ml	40-0110-00
Box of 12 bottles (2.1 kg/nt. wt.)		
1 box	400 ml	40-0111-00
Box of 12 bottles (3.9 kg/nt. wt.)		

Cryo Embedding Medium

Embedding Fluid



- Embedding fluid for Cryo sections
- Temperature for use: -10 °C to -30 °C

Minimum Purchase Quantity	Size	Cat. No.
1 box	125 ml	41-3011-00
Box of 6 bottles (1 bottle of 0.16 kg/nt. wt.)		

Filter Paper

For embedding cassettes

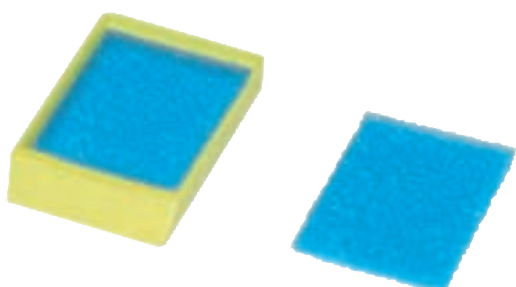


- For processing of biopsy compounds
- Dimensions: 26 x 66 mm
- Easy to tear off

Minimum Purchase Quantity	Color	Cat. No.
1 box	White	46-6200-00
Box of 10 pads of 100 sheets (1 box of 0.12 kg/nt. wt.)		

Filter Pads

For embedding cassettes



- For processing of biopsy compounds
- Made of foam
- Dimensions (W/D/H): 26 x 32 x 2 mm

Minimum Purchase Quantity	Color	Cat. No.
1 Bag	Blue	47-1060-00
Bag of 500 pads (0.03 kg/nt. wt.)		

Biopsy Bags



- Solvent-resistant bags made of Polyester
- For use in decalcification
- Fluent liquid movement around the tissue
- Prevents loss of small biopsies
- Less carry over of solvents and curettings

Minimum Purchase Quantity	Size	Cat. No.
1 pack Pack of 1,000 pcs. (0.18 kg/nt. wt.)	Small, 30 x 45 mm	47-2020-00
1 pack Pack of 1,000 pcs. (0.24 kg/nt. wt.)	Big, 45 x 60 mm	47-2021-00

Tamper

For embedding



- Helpful tool with heat-resistant handle
- For positioning and stamping of tissue specimen

Minimum Purchase Quantity	Size	Cat. No.
1 piece (0.24 kg/nt. wt.)	Big, 19 x 19 mm	46-0910-00
1 piece (0.006 kg/nt. wt.)	Medium, 13 x 13 mm	46-0911-00
1 piece (0.003 kg/nt. wt.)	Small, 7 x 7 mm	46-0912-00

Filter Cards

For centrifuges

Shandon Type I



Shandon Type II



Type Sakura



- Different types:
 - Shandon Type I, for Shandon-Cytospin™,
 - Shandon Type II, for Shandon-Cytospin™,
 - Type Sakura, for Sakura-Cyto-Tek® Cyto Centrifuge

™ registered trademark of Shandon Southern Products Ltd.

® registered trademark of Sakura Finetek Japan Kabushiki Kaisha

Minimum Purchase Quantity	Type	Cat. No.
1 box Box of 200 pcs.	Shandon Type I	46-6110-00
	Shandon Type II	46-6120-00
	Type Sakura	46-6130-00

Microtome Blades TissueCut®

Disposable blades, High and Low Profile

R 70



Type R 70 – High Profile

- High profile blades made of stainless steel
- For routine sections with harder material
- Excellent sectioning quality, even directly after trimming at same blade position
- Great standing times, edge stability and hardness

R 52



Type R 52 – Low Profile

- Low profile blades made of stainless steel
- For routine sections with harder material
- Excellent sectioning quality, even directly after trimming at same blade position
- Great standing times, edge stability and hardness

N 42



Type N 42 – Low Profile

- Low profile blades made of stainless steel with extra hardened cutting edge
- For very hard tissue on sliding and rotary microtomes
- Excellent sectioning results and standing times after longer trimming
- Long blade durability

S 67



Type S 67 – Low Profile

- Low profile blades made of stainless steel
- For thin paraffin sections, also approved in routine
- High sectioning speed and edge sharpness standing time

A 26



Type A 26 – Low Profile

- Low profile blades made of stainless steel
- For soft and hard tissue as well as extra thin sections
- Great standing times, short sectioning time with respective clearance angle

S 80



Type S 80 – Low Profile

- Low profile blades made of stainless steel
- For extra thin paraffin sections
- High sectioning speed
- Great standing times

Minimum Purchase Quantity

1 Dispenser

Dispenser of 50 blades (0.09 kg/netto)

Type

Cat. No.

R 70 High Profile 48-1601-00

R 52 Low Profile 48-1600-00

N 42 Low Profile 48-1610-00

S 67 Low Profile 48-1620-00

A 26 Low Profile 48-1630-00

S 80 Low Profile 48-1640-00

Microtome Blades TissueCut® PLASMA

Disposable blades, High and Low Profile

HS35



Type HS35 – High Profile

- High Profile blades made of stainless steel mit plasma coating
- Perfect for cryo sections with the Cryostat and sectioning tape
- Special blade curing
- Short trimming time and great stability

LS35



Type LS35 – Low Profile

- Low Profile blades made of stainless steel with extra hardened cutting edge
- For very hard tissue on sliding and rotary microtomes
- Excellent sectioning results and standing times after longer trimming
- Long blade durability

LH35



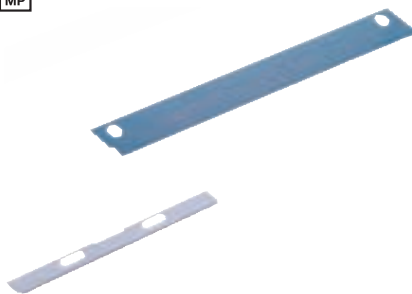
Type LH35 – Low Profile

- Low Profile blades made of stainless steel
- For thin paraffin sections, also approved in routine
- High sectioning speed and edge sharpness standing time

Minimum Purchase Quantity	Type	Cat. No.
1 Dispenser	HS35 High Profile	48-1670-00
Dispenser of 50 blades (0.09 kg/nt. wt.)	LS35 Low Profile	48-1680-00
	LH35 Low Profile	48-1690-00

Trimming Blades

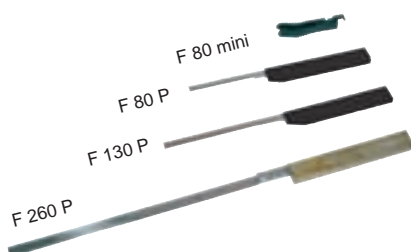
CE MP



- Super sharp special blades for deformation-free sectioning
- Different types:
 - 80 mm, for combination with grips Type F 80 P (46-3105-00) and Type F 80 mini (46-3106-00)
 - 130 mm, for combination with grip Type F 130 P (46-3110-00)
 - 260 mm, for combination with grip Type F 260 P (46-3120-00)

Minimum Purchase Quantity	Size	Cat. No.
1 pack	80 mm	46-3010-00
Pack of 50 blades (0.1 kg/nt. wt.)		
1 pack	130 mm	46-3119-00
Pack of 50 blades (0.23 kg/nt. wt.)		
1 pack	260 mm	46-3129-00
Pack of 50 blades (0.5 kg/nt. wt.)		

Trimming Grips



- Trimming instruments with extra sharp special blade for deformation-free sectioning
- Material: Heat resistant plastic, ergonomic
- All standard grips are autoclavable (except Type F 80 mini)
- Different Types:
 - Type F 80 P, for blades of length 80 mm, grip length: 217 mm
 - Type F 80 mini, for blades of length 80 mm, grip length: 80 mm
 - Type F 130 P, for blades of length 130 mm, grip length: 217 mm
 - Type F 260 P, for blades of length 260 mm, grip length: 390 mm

Minimum Purchase Quantity	Type	Cat. No.
1 piece	F 80 P	46-3105-00
	F 80 mini	46-3106-00
	F 130 P	46-3110-00
	F 260 P	46-3120-00

Staining Solutions Histology Premium



Minimum Purchase Quantity	Type	Cat. No.
1 bottle <i>Bottle of 1 liter (1.2 kg/nt. wt.)</i>	Hematoxyline MAYER, 1l	41-5130-00
1 bottle <i>Bottle of 2.5 liter (2.8 kg/nt. wt.)</i>	Hemantoxylene MAYER, 2.5l	41-5131-00
1 bottle <i>Bottle of 1 liter (1.2 kg/nt. wt.)</i>	Hematoxyline Harris, 1l	41-5135-00
1 bottle <i>Bottle of 2.5 liter (2.8 kg/nt. wt.)</i>	Hematoxyline Harris, 2.5l	41-5136-00
1 bottle <i>Bottle of 2.5 Liter (2.6 kg/nt. wt.)</i>	Eosin 0.2%, alcoh., 2.5l	41-5141-00
1 bottle <i>Bottle of 1 liter (1.1 kg/nt. wt.)</i>	Giemsa, 1l	41-5120-00

Staining Solutions Histology Standard



Minimum Purchase Quantity	Type	Cat. No.
1 bottle <i>Bottle of 1 liter (1.1 kg/nt. wt.)</i>	Hematoxyline MAYER, 1l	41-6810-00
1 bottle <i>Bottle of 2.5 liter (2.8 kg/nt. wt.)</i>	Hematoxyline MAYER, 2.5l	41-6860-00
1 bottle <i>Bottle of 5 liters</i>	Hematoxyline MAYER, 5l	41-6861-00
1 bottle <i>Bottle of 1 liter (1.1 kg/nt. wt.)</i>	Hematoxyline Harris, 1l	41-6800-00
1 bottle <i>Bottle of 2.5 liter (2.9 kg/nt. wt.)</i>	Hematoxyline Harris, 2.5l	41-6850-00
1 bottle <i>Bottle of 5 liters</i>	Hematoxyline Harris, 5l	41-6851-00
1 bottle <i>Bottle of 1 liter (0.9 kg/nt. wt.)</i>	Eosin 0.2%, alcoh., 1l	41-6600-00
1 bottle <i>Bottle of 2.5 liter (2.4 kg/nt. wt.)</i>	Eosin 0.2%, alcoh., 2.5l	41-6650-00
1 bottle <i>Bottle of 5 liters</i>	Eosin 0.2%, alcoh., 5l	41-6651-00
1 bottle <i>Bottle of 1 liter (0.9 kg/nt. wt.)</i>	Eosin 0.2%, acqu., 1l	41-6660-00
1 bottle <i>Bottle of 1 liter (1.1 kg/nt. wt.)</i>	Eosin 0.2%, acqu., 2.5l	41-6670-00
1 bottle <i>Bottle of 2.5 liter (2.7 kg/nt. wt.)</i>	Eosin 0.5%, acqu., 2.5l	41-6671-00
1 bottle <i>Bottle of 5 liters</i>	Eosin 0.2%, acqu., 5l	41-6672-00
1 bottle <i>Bottle of 5 liters</i>	Eosin 0.5%, acqu., 5l	41-6673-00
1 bottle <i>Bottle of 1 liter (1.1 kg/nt. wt.)</i>	Giemsa, 1l	41-6680-00
1 bottle <i>Bottle of 5 liters</i>	Giemsa, 5l	41-6681-00

Staining Solutions Cytology Premium



<i>Minimum Purchase Quantity</i>	<i>Type</i>	<i>Cat. No.</i>
1 bottle <i>Bottle of 1 liter (1.2 kg/nt. wt.)</i>	Papanicolaou 1A, 1l HematoxylineHarris(PAP)	41-5135-00
1 bottle <i>Bottle of 2.5 liter (2.8 kg/nt. wt.)</i>	Papanicolaou 1A, 2.5l HematoxylineHarris(PAP)	41-5136-00
1 bottle <i>Bottle of 2.5 liter (2.3 kg/nt. wt.)</i>	Papanicolaou, 2.5l 2A OG6	41-5151-00
1 bottle <i>Bottle of 1 liter (1.0 kg/nt. wt.)</i>	Papanicolaou, 1l 2B Orange II	41-5160-00
1 bottle <i>Bottle of 2.5 liter (2.3 kg/nt. wt.)</i>	Papanicolaou, 2.5l 2B Orange II	41-5161-00
1 bottle <i>Bottle of 1 liter (0.9 kg/nt. wt.)</i>	Papanicolaou, 1l 3B EA50	41-5170-00
1 bottle <i>Bottle of 2.5 liter (2.3 kg/nt. wt.)</i>	Papanicolaou, 2.5l 3B EA50	41-5171-00

Staining Solutions Cytology Standard



<i>Minimum Purchase Quantity</i>	<i>Type</i>	<i>Cat. No.</i>
1 bottle <i>Bottle of 1 liter (1.1 kg/nt. wt.)</i>	Papanicolaou 1A, 1l HematoxylineHarris(PAP)	41-6800-00
1 bottle <i>Bottle of 2.5 liter (2.9 kg/nt. wt.)</i>	Papanicolaou 1A, 2.5l HematoxylineHarris(PAP)	41-6850-00
1 bottle <i>Bottle of 5 liter</i>	Papanicolaou 1A, 5l HematoxylineHarris(PAP)	41-6851-00
1 bottle <i>Bottle of 1 liter (1.0 kg/nt. wt.)</i>	Papanicolaou, 1l 2A OG6	41-6700-00
1 bottle <i>Bottle of 2.5 liter (3.4 kg/nt. wt.)</i>	Papanicolaou, 2.5l 2A OG6	41-6750-00
1 bottle <i>Bottle of 1 liter (0.9 kg/nt. wt.)</i>	Papanicolaou, 1l 2B Orange II	41-6710-00
1 bottle <i>Bottle of 2.5 liter (2.3 kg/nt. wt.)</i>	Papanicolaou, 2.5l 2B Orange II	41-6720-00
1 bottle <i>Bottle of 5 liter</i>	Papanicolaou, 5l 2B Orange II	41-6721-00
1 bottle <i>Bottle of 1 liter (0.9 kg/nt. wt.)</i>	Papanicolaou, 1l 3B EA50	41-6760-00
1 bottle <i>Bottle of 2.5 liter (2.5 kg/nt. wt.)</i>	Papanicolaou, 2.5l 3B EA50	41-6770-00
1 bottle <i>Bottle of 1 liter (0.9 kg/nt. wt.)</i>	May Grünwald, 1l	41-6690-00

Slide Staining Set

Large



- Acid-proof rack made of stainless steel
- Front rewritable with wipeable pen
- Plastic troughs with lid
- Resistant to alcohol, xylene, toluene and staining solutions
- Nylon slide basket for 26 microscope slide, with microwaveable handle
- Dimensions (W/D/H): 710 x 140 x 130 mm
- Complete set consisting of:
 - rack made of stainless steel
 - 12 troughs with lid
 - 1 slide basket with plastic handle

Minimum Purchase Quantity	Size	Cat. No.
1 set (3.4 kg/nt. wt. without contents)	Big	47-3112-00

Slide Staining Set

Medium



- Acid-proof rack made of stainless steel
- Front rewritable with wipeable pen
- Plastic troughs with lid
- Resistant to alcohol, xylene, toluene and staining solutions
- Nylon slide basket for 26 microscope slide, with microwaveable handle
- Dimensions (W/D/H): 370 x 140 x 130 mm
- Complete set consisting of:
 - rack made of stainless steel
 - 6 troughs with lid
 - 1 slide basket with plastic handle

Minimum Purchase Quantity	Size	Cat. No.
1 set (1.9 kg/nt. wt. without contents)	Medium	47-3116-00

Slide Staining Set

Small



- Acid-proof rack made of stainless steel
- Front rewritable with wipeable pen
- Plastic troughs with lid
- Resistant to alcohol, xylene, toluene and staining solutions
- Nylon slide basket for 26 microscope slide, with microwaveable handle
- Dimensions (W/D/H): 200 x 140 x 130 mm
- Complete set consisting of:
 - rack made of stainless steel
 - 3 troughs with lid
 - 1 slide basket with plastic handle

Minimum Purchase Quantity	Size	Cat. No.
1 set (1.1 kg/nt. wt. without contents)	Small	47-3121-00

Staining trough and lid

For slide staining sets

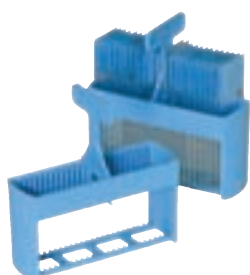


- Staining trough made of thermoplast for slide staining sets
- Inner dimensions (W/D/H): 96 x 45 x 100 mm
- Outer dimensions (W/D/H): 117 x 50 x 100 mm
- Volume: 360 ml
- Lid made of stainless steel

Minimum Purchase Quantity	Type	Cat. No.
1 piece (0.08 kg/nt. wt.)	Staining Trough	35-2002-50
1 bag Bag of 6 pcs.	Lid for Staining Trough	43-5070-00

Microscope Slide Holder

For slide staining sets



- For 25 microscope slides
- Microwaveable
- For slide staining sets Cat. No.:
 - 47-3112-00
 - 47-3116-00
 - 47-3121-00

Minimum Purchase Quantity	Color	Cat. No.
1 box Box of 6 pcs. (0.18 kg/nt. wt.)	Blue	47-3142-00



* Safety advice for working with Glass Staining Products: Staining items made of glass consist of thick-walled soda lime glass with a relatively high expansion coefficient. Do not expose it to quick temperature changes. Heat and cool slowly to avoid stress cracks.

Staining Glass Jar Hellendahl*

With enhancement



- Glass container, enhanced model
- With 9 immersions for 18 microscope slides, back to back
- Delivery includes lid
- Dimensions (W/D/H): 60 x 55 x 105 mm

Minimum Purchase Quantity	Type	Cat. No.
1 Set Set of 1 jar with lid (0.4 kg/nt. wt.)	Staining Glass Jar Hellendahl	48-6700-00

Staining Glass Jar Schiefferdecker*



- Glass container, upright
- With 10 immersions for 20 microscope slides, back to back
- Delivery includes lid
- Dimensions (W/D/H): 85 x 70 x 45 mm

Minimum Purchase Quantity	Type	Cat. No.
1 Set Set of 1 jar with lid (0.3 kg/nt. wt.)	Staining Glass Jar Schiefferdecker	48-6710-00

Staining Glass Container*

For glass staining rack with 20 slides



- Glass Container for Glass Staining Rack Cat. No. 46-3550-00
- Delivery includes lid
- Dimensions (W/D/H): 105 x 85 x 75 mm

Minimum Purchase Quantity	Type	Cat. No.
1 Set Set of 1 jar with lid (0.6 kg/nt. wt.)	Staining Glass Container	46-3551-00

Glass Staining Rack

For 20 slides



- Horizontal, rectangular model
- With 10 immersions for 20 slides, back to back
- Without Hanger, to be ordered separately
- Dimensions (W/D/H): 95 x 70 x 50 mm

Minimum Purchase Quantity	Type	Cat. No.
1 piece (0.135 kg/nt. wt.)	Glass Staining Rack	46-3550-00
1 piece (0.007 kg/nt. wt.)	Hanger for Staining Rack	46-3552-00

Coplin Staining Jar with base

For 10 slides



- Glass Container, round model
- With 5 immersions for 10 slides, back to back
- Delivery includes lid
- Dimensions (H/Ø): 115 x 75 mm

Minimum Purchase Quantity	Type	Cat. No.
1 Set Set of 1 jar with lid (0.3 kg/nt. wt.)	Coplin Staining Jar	48-6720-00

Staining Glass Jar*

For 20 slides



- Staining glass jar for 30 slides
- Delivery includes lid
- Dimensions (W/D/H): 110 x 100 x 100 mm
- Slide basket separately available

Minimum Purchase Quantity	Type	Cat. No.
1 Set	Staining Glass Jar	48-6730-00
<i>Set of 1 jar with lid (0.77 kg/nt. wt.)</i>		
1 piece (0.11 kg/nt. wt.)	Slide Basket for 30 Slides	48-6731-00

Staining Glass Jar*

For 60 slides



- Staining glass jar for 30 slides
- Delivery includes lid
- Dimensions (W/D/H): 160 x 100 x 100 mm
- Slide basket separately available

Minimum Purchase Quantity	Type	Cat. No.
1 Set	Staining Glass Jar	48-6740-00
<i>Set of 1 jar with lid (1.21 kg/nt. wt.)</i>		
1 piece (0.16 kg/nt. wt.)	Slide Basket for 60 Slides	48-6741-00

Transfer Pipettes



- For laboratory routine use
- Packed in a handy dispenser box
- Max. volume: 7 ml
- Scale markings in 0.5 ml, up to 3 ml
- Length: 155 mm

Minimum Purchase Quantity	Type	Cat. No.
1 box	Transfer Pipettes	45-6100-00
<i>Box of 500 pcs. (0.8 kg/nt. wt.)</i>		

Marker

For labelling cassettes and microscope slides



- Fibre pencil with permanent black ink
- Resistant against acids, alcohol, xylene and other solvents
- For labelling tissue embedding cassettes and microscope slides
- Solvent-free, odorless and waterbased, therefore no early drying out

Minimum Purchase Quantity	Color	Cat. No.
1 box	Black	47-1070-00
<i>Box of 12 pcs. (0.12 kg/nt. wt.)</i>		

Tissue Marking Dye

- Excellent for marking excised tissue margins
- Non-toxic
- Great visibility under the microscope



Minimum Purchase Quantity	Color	Cat. No.
1 bottle	Black	41-7001-01
<i>1 bottle of 100 ml (0.07 kg/nt. wt.)</i>		
	Blue	41-7002-01
	Green	41-7003-01
	Orange	41-7004-01
	Red	41-7005-01
	Yellow	41-7007-01

* Safety advice for working with Glass Staining Products: Staining items made of glass consist of thick-walled soda lime glass with a relatively high expansion coefficient. Do not expose it to quick temperature changes. Heat and cool slowly to avoid stress cracks.



Microscope Slides

Standard

No frosted ends

CE IVD



- Slides made of halfwhite glass
- Dimensions: 26 x 76 mm (1 x 3")
- Thickness: 1.0 to 1.2 mm
- Beveled corners, 90° edges

Minimum Purchase Quantity

10,000 pcs.

Box of 50 pcs. (0.3 kg/nt. wt.)

Type

Slides with no frosted ends

Cat. No.,

48-6100-00

Microscope Slides

Safeslide

Frosted ends

CE IVD



Safeslide Histo

- Slides made of halfwhite glass
- With double frosted ends (ca. 20 mm)
- Dimensions: 26 x 76 mm (1 x 3")
- Thickness: 1,0 bis 1,2 mm
- Beveled corners
- Cut corners, 90°

Safeslide Histo S

- Slides made of halfwhite glass
- With double frosted ends (ca. 15 mm)
- Dimensions: 26 x 76 mm (1 x 3")
- Thickness: 1.0 to 1.2 mm
- Beveled corners
- Cut edges, 90°

Safeslide Cyto

- Slides made of halfwhite glass
- With double frosted ends (ca. 20 mm)
- Dimensions: 26 x 76 mm (1 x 3")
- Thickness: 1.0 to 1.2 mm
- With fine sheet dividers
- Beveled corners
- Cut edges, 90°

Minimum Purchase Quantity

2,500 pcs.

Box of 50 pcs. (0.3 kg/nt. wt.)

Type

Safeslide Histo

Safeslide Histo S

Safeslide Cyto

Cat. No.

48-6101-00

48-6105-00

48-6102-00

Microscope Slides

Color frosted end

- One side color frosted
- Beveled corners, 90° edges
- Dimensions: 26 x 76 mm (1 x 3")
- Thickness: 1.0 to 1.2 mm



Minimum Purchase Quantity

2,500 pcs.

Box of 50 pcs. (0.3 kg/nt. wt.)

Color

White

Orange

Yellow

Green

Pink

Blue

Cat. No.

48-6103-00

48-6103-01

48-6103-02

48-6103-03

48-6103-04

48-6103-05

Microscope Slides StarFrost® Adhesive

© registered trademark of Waldemar Knittel Glasbearbeitungs GmbH



- Soda lime glass with one frosted end (ca. 20 mm)
- Silanized for perfect adhesions
- Polished edges 90°
- Dimensions: 26 x 76 mm (1 x 3")
- Thickness: 1 mm

Minimum Purchase Quantity	Color	Cat. No.
1,000 pcs.	White	46-9100-00
Box of 50 pcs. (0.24 kg/nt. wt.)	Pink	46-9110-00
	Yellow	46-9120-00
	Green	46-9130-00
	Blue	46-9140-00
	Orange	46-9150-00

Microscope Slides StarFrost® Extra Adhesive for IHC

© registered trademark of Waldemar Knittel Glasbearbeitungs GmbH



- Perfect for use in the field of immunohistochemistry (IHC) and other challenging processes
- Strong adhesion, no tissue run
- Dimensions: 26 x 76 mm (1 x 3")
- Thickness: 1 mm
- Polished edges 90°

Minimum Purchase Quantity	Color	Cat. No.
1,000 pcs.	White	46-9700-00
Box of 50 pcs. (0.25 kg/nt. wt.)		

Microscope Slides Tissuslide Made of halfwhite glass

- Maße: 26 x 76 mm (1 x 3")
- Stärke: 1 mm



Minimum Purchase Quantity	Type	Cat. No.
2,500 pcs.	Cut Edges	46-7210-00
Box of 50 pcs. (0.25 kg/nt. wt.)	Cut Edges double frosted ends	46-7220-00

Microscope Slides Histobond® Adhesive surface

© registered trademark of Paul Marienfeld GmbH + Co. KG

CE IVD



- Adhesive with silanized surface for safe adhesion of tissue
- Double frosted end
- Dimensions: 25 x 75 mm
- Thickness: 1 mm
- Cut edges 90°

Minimum Purchase Quantity	Type	Cat. No.
1,000 pcs.	Folding Box of 50 pcs.	46-8100-00
Box of 50 pcs. (0.24 kg/nt. wt.)		
1,000 pcs.	Folding Box of 100 pcs.	46-8101-00
Box of 100 pcs. (0.50 kg/nt. wt.)		

Microscope Slides SuperFrost® and Polysine®

© registered trademark of Gerhard Menzel B.V. & Co. KG

CE IVD



- Dimensions: 25 x 75 mm,
- Thickness: 1 mm
- Cut edges 90°
- Whit white-labelled end
- Polysine® slides are adhesive

Minimum Purchase Quantity	Type	Cat. No.
1 box	SuperFrost® Plus	46-8110-00
Box of 72 pcs. (0.37 kg/nt. wt.)		
1 box	Polysine®	46-8120-00
Box of 72 pcs. (0.37 kg/nt. wt.)		

CytoTape®

Coverslipping Film – Made in Germany

CE IVD



- For use in Film Coverslippers
- Length 70 m, Width 24 mm
- For about 1,200 coverslips of 50 mm
- Quick adhesion
- Easy to remove

Minimum Purchase Quantity	Type	Cat. No.
5 spools	CytoTape®	40-4300-00
Box of 5 spools (1.9 kg/nt. wt.)		

Automat Coverglass

High quality special coverglass

CE IVD



- Coverglass for use in coverslipping automats
- Made in Germany
- Thickness 1: 0.13 to 0.17 mm

Minimum Purchase Quantity	Size	Cat. No.
10,000 pcs.	24 x 40 mm, Thickness 1	46-9457-00
Box of 1,000 pcs. (0.483 kg/nt. wt.)		
10,000 pcs.	24 x 50 mm, Thickness 1	46-9452-01
Box of 1,000 pcs. (0.570 kg/nt. wt.)		
10,000 pcs.	24 x 55 mm, Thickness 1	46-9455-01
Box of 1,000 pcs. (0.625 kg/nt. wt.)		
10,000 pcs.	24 x 60 mm, Thickness 1	46-9451-01
Box of 1,000 pcs. (0.620 kg/nt. wt.)		

Coverglass Standard

- Coverglass for universal use
- Thickness 1: 0.13 - 0.17 mm
- Thickness 1.5: 0.16 - 0.19 mm



Minimum Purchase Quantity	Size	Cat. No.
10,000 pcs.	24 x 40 mm, Thickness 1	48-5040-00
Box of 100 pcs.	24 x 40 mm, Thickness 1.5	48-5540-00
	24 x 50 mm, Thickness 1	48-5050-00
	24 x 50 mm, Thickness 1.5	48-5550-00
	24 x 55 mm, Thickness 1	48-5055-00
	24 x 55 mm, Thickness 1.5	48-5555-00
	24 x 60 mm, Thickness 1	48-5060-00
	24 x 60 mm, Thickness 1.5	48-5560-00

pertex®

Mounting medium



- Synthetic, xylene-soluble mounting medium
- Perfect for use in MEDITE coverslipping machines

Minimum Purchase Quantity	Size	Cat. No.
6 bottles 1 bottle of 200 ml (0.209 kg/nt. wt.)	200 ml	41-4010-00
6 bottles 1 bottle of 500 ml (0.543 kg/nt. wt.)	500 ml	41-4011-00
6 bottles 1 bottle of 1,000 ml (1.04 kg/nt. wt.)	1,000 ml	41-4012-00

Mountex®

Mounting medium for xylene-free coverslipping

CE IVD



- Mountex® contains xylene, which makes it unnecessary to use more xylene throughout the coverslipping process
- Synthetic mounting medium for coverslipping directly out of alcohol
- Isopropyl and alcohol soluble
- Bubble-free coverslipping without changing form, structure or color of the compound
- Quick-drying
- Good flowing characteristics

Minimum Purchase Quantity	Size	Cat. No.
6 bottles Bottle of 500 ml (0.51 kg/nt. wt.)	500 ml	41-4021-00
6 bottles Bottle of 1,000 ml (1.0 kg/nt. wt.)	1,000 ml	41-4022-00

X-TRA-Kitt

Mounting Medium



- Synthetic, xylene-free mounting medium
- Microscope slides can be mounted directly from **X-TRA-Solv** (p. 25)

Minimum Purchase Quantity	Size	Cat. No.
6 bottles Bottle of 500 ml (0.69 kg/nt. wt.)	500 ml	41-5219-00

Mount Quick

Mounting medium aqueous



- Medium for mounting of stained sections for lipid and immunostaining in histology and immunohistology
- Use in histology: During usage of lipid staining or if dehydrating the samples means losing the staining characteristics
- Use in immunohistology: During usage of soluble chromogenic solutions like AEC with an organic solvent

Minimum Purchase Quantity	Color	Cat. No.
1 bottle (0.043 kg/nt. wt.)	30 ml	41-5234-00

Sprayfix

Fixative



- Fixation medium for cytological smear
- Clear of propellant, non-polluting
- Soluble in alcohol and water
- Content of one bottle is sufficient for approx. 1,000 to 1,500 smears

Minimum Purchase Quantity	Size	Cat. No.
36 bottles 1 box of 36 bottles (1 bottle of 0.2 kg/nt. wt.)	200 ml	41-2010-00

Xylene



- Mixture of isomeres for deparaffination of histological section
- Colorless fluid with aromatic odor
- Not soluble in water
- Pure, filled in plastic cans

<i>Minimum Purchase Quantity</i>	<i>Size</i>	<i>Cat. No.</i>
1 can	5 l	41-5412-00
	10 l	41-5413-00

X-TRA-Solv

Xylene substitute

- Clearing reagent based on isoparaffins for embedding and deparaffination
- Great alternative to aromatic clearing agents for histopathological and cytological applications



<i>Minimum Purchase Quantity</i>	<i>Size</i>	<i>Cat. No.</i>
1 can (2.3 kg/nt. wt.)	Can of 2.5 l	41-5211-00
1 can (4.0 kg/nt. wt.)	Can of 5 l	41-5212-00
1 can (8.0 kg/nt. wt.)	Can of 10 l	41-5213-00

new decalc[®]

Rapid bone decalcifier

- Effective, rapid bone decalcifier for preparation of histological materials with improved morphological tissue preservation
- The stained samples show an excellent presentation of histological details
- For all common fixing methods



<i>Minimum Purchase Quantity</i>	<i>Size</i>	<i>Cat. No.</i>
6 bottles 1 bottle of 1 l (1.14 kg/nt. wt.)	Bottle of 1 l	41-5710-00

Ethanol

Alcohol, denatured

CE IVD



- Organic solvent
- Denatured with MEK and Denatoniumbenzoat
- For histological dehydration and staining
- For use in cleaning, disinfection and as antiseptic agent

Minimum Purchase Quantity	Type/Size	Cat. No.
1 can of 10 l	Ethanol 96% , 10 l	41-5573-10
1 can of 5 l	Ethanol 96% , 5 l	41-5572-10
1 can of 30 l	Ethanol 99% , 30 l	41-5586-10
1 can of 10 l	Ethanol 99% , 10 l	41-5583-10
1 can of 5 l	Ethanol 99% , 5 l	41-5582-10

Isopropyl

Secondary alcohol



- Highly concentrated isopropyl (alcohol) (min. 99.5 %) for cleaning and disinfection
- Can be mixed and reduced with water
- Versatile, e. g. as substitute for Ethanol

Minimum Purchase Quantity	Size	Cat. No.
1 can	Isopropyl, 5 l	41-5522-00
Can of 5 l (4.3 kg/nt. wt.)		
1 can	Isopropyl, 25 l	41-5525-00
Can of 25 l (20.0 kg/nt. wt.)		

USERAPID

Decalcifying solution



- Special reagent for decalcifying of histologic material
- Decalcification time, depending on the size of specimen: 1 - 3 hrs.
- Maximum conservation of morphologic structures
- Shelf life: up to 2 years
- Store dark at 4 °C to 25 °C

Minimum Purchase Quantity	Size	Cat. No.
1 can	USERAPID, 5 l	40-3300-00
Can of 5 l (5.8 kg/nt. wt.)		
1 bottle	USERAPID, 1 l	40-3300-01
Bottle of 1 l		

USEDECALC

Decalcifying Solution



- pH-neutral, buffered customized solution for rapid decalcification of histologic material
- Up to 40 - 75 % reduction of decalcification time in comparison to conventional EDTA techniques by using MEDITE's USE 33 Decalcifier equipment
- Maximum conservation of morphologic structures, especially developed for immunohistochemical procedures
- Shelf life: up to 2 years
- Store dark at 4 °C to 25 °C

Minimum Purchase Quantity	Size	Cat. No.
1 can	USEDECALC, 5 l	40-3310-00
Can of 5 l (5.9 kg/nt. wt.)		
1 bottle	USEDECALC, 1 l	40-3310-01
Bottle of 1 l		

RDO® Rapid Bone Decalcifier

© registered trademark of Apex Engineering Products Corporation



- Rapid bone decalcifier for preparation of histological materials
- Standard sections with outstanding histological details and staining qualities can be attained within shortest time by careful use
- All usual fixing methods can be applied

<i>Minimum Purchase Quantity</i>	<i>Size</i>	<i>Cat. No.</i>
1 bottle <i>Bottle of 3.84 l (9.1 kg/nt. wt.)</i>	RDO®, 3.84 l	41-5711-00

Formalin



- Formalin solution, 4 Vol. % w/v, phosphate buffered, pH 6.8 - 7.2
- Formalin fixation ensures great penetration and preservation of tissue
- Interlacing proteins with each other and in part immobilization of soluble antigens by using formalin, also masking or destruction of antigenetic structures

<i>Minimum Purchase Quantity</i>	<i>Size</i>	<i>Cat. No.</i>
1 can <i>Can of 10 l (10.9 kg/nt. wt.)</i>	Formalin, 10 l	41-5313-00
1 can <i>Can of 20 l (21.7 kg/nt. wt.)</i>	Formalin, 20 l	41-5314-00

Formalin Neutralizer



- 40 litres (e.g. 4% or 10%) formalin solution can safely and simply be neutralized by 5 kg neutralizer within 24 hrs.
- The neutralizer converts formalin by a simple non-hazardous reaction to harmless esters and acids
- The final products of the neutralization of a 4% formalin solution only contain lowest concentration of methanol and usually can be disposed with waste water according to the local disposal regulations

<i>Minimum Purchase Quantity</i>	<i>Size</i>	<i>Cat. No.</i>
1 bucket <i>Bucket of 5 kg (5.5 kg/nt. wt.)</i>	Formalin Neutralizer 5 kg	41-5302-00

Digi Timer



- Electronic timer with four-digit display for minutes and seconds
- Countdown with alarm at lapse of time
- Magnet for attaching the timer to metallic surfaces
- Timer up to 99 hrs and 59 seconds

<i>Minimum Purchase Quantity</i>	<i>Type</i>	<i>Cat. No.</i>
1 piece <i>(0.03 kg/nt. wt.)</i>	DigiTimer	72-7010-00

Slide Filing Boxes

For ca. 1,200 microscope slides



- Extremely stable box for storage of approx. 1,200 slides 76 x 26 mm in 5 rows
- Stopper to avoid tumbling and slipping
- Box and lid with printed label
- Material: cardboard, white
- Dimensions (W/D/H): 295 x 165 x 85 mm

<i>Minimum Purchase Quantity</i>	<i>Type</i>	<i>Cat. No.</i>
1 carton <i>Carton of 25 pcs. (9.0 kg/nt. wt.)</i>	Slide Filing Box	46-5120-00

Paraffin Block Filing Boxes

For ca. 350 paraffin blocks



- Extremely stable box for storage of approx. 350 paraffin blocks in 7 rows
- Stopper to avoid tumbling and slipping
- Box and cover with printed label
- Material: cardboard, white
- Dimensions (W/D/H): 360 x 290 x 50 mm

<i>Minimum Purchase Quantity</i>	<i>Type</i>	<i>Cat. No.</i>
1 carton <i>Carton of 25 pcs. (10.0 kg/nt. wt.)</i>	Paraffin Block Filing Boxes	46-5110-00

Objektträger-Archivtasche SAT 04



- Slide filing map for the filing of specimen of special scientific interest in a plastic map with 4 pockets for slides and 1 pocket for report including white index card
- Dimensions: Filing map (L/W): 155 x 107 mm
Box (W/D/H): 210 x 165 x 115 mm
- Backup index cards in different colors available upon request

<i>Minimum Purchase Quantity</i>	<i>Type</i>	<i>Cat. No.</i>
1 box <i>Box of 100 pcs. (1.6 kg/nt. wt.)</i>	Slide Filing Map SAT 04	46-5130-00

Bio-Block

Filing cabinet for paraffin blocks



- Modular system made of thermoplastic with 8 drawers and each with 7 rows for efficient storage of biopsy and embedding cassettes
- Capacity: approx. 1,500 paraffin blocks
- Dimensions (W/D/H): 240 x 400 x 310 mm
- Weight: 6 kg

<i>Minimum Purchase Quantity</i>	<i>Type</i>	<i>Cat. No.</i>
1 piece <i>(5.3 kg/nt. wt.)</i>	Bio-Block	47-5040-00

Cardboard Slide Mailer

For microscope slides

- Slide mailer made of strong cardboard with lid
- For microscope slides 76 x 26 mm
- Punched-out grid and flap lid made of grey cardboard
- Affixed index



Minimum Purchase Quantity	Size	Cat. No.
1 box	For 2 Microscope Slides	48-6002-00
Box of 50 pcs.	For 3 Microscope Slides	48-6003-00

Plastic Slide Mailer

For microscope slides

- Slide mailer made of polyethylene
- With snap-on lid
- For 5 microscope slides 76 x 26 mm



Minimum Purchase Quantity	Type	Cat. No.
1 box	Plastic Slide Mailer	48-6012-00
Box of 100 pcs.		

Slide Tray

For 20 microscope slides

- Slide tray made of strong cardboard
- For horizontal preserving of 20 microscope slides
- For microscope slides 76 x 26 mm
- Punched-out grid, without lid
- With division



Minimum Purchase Quantity	Type	Cat. No.
100 pcs.	For 20 Microscope Slides	48-6006-00
Box of 10 pcs.		

Slide Tray

For 10 microscope slides

- Slide tray made of strong cardboard
- For horizontal preserving of 9 microscope slides
- For microscope slides 76 x 26 mm
- Punched-out grid, with lid
- With division



Minimum Purchase Quantity	Type	Cat. No.
1 box	For 9 Microscope Slides	48-6005-00
Box of 10 pcs.		

Slide Folder Munich

For microscope slides



- Slide folder made of thick white cardboard
- With punched out lid
- For 24 microscope slides 76 x 26 mm
- Divided in three blocks of 78 x 213 mm each
- Dimensions (W/H): 235 x 260 mm

Minimum Purchase Quantity	Type	Cat. No.
1 pc.	Slide Folder Munich	46-5010-00

Slide Folder

For microscope slides



- Slide folder made of strong cardboard with lid
- For microscope slides 76 x 26 mm
- Punched out grid and lid with affixed index

Minimum Purchase Quantity	Type	Cat. No.
1 box	For 10 Microscope Slides	48-6007-00
Box of 5 pcs. (1.0 kg/nt. wt.)		
1 box	For 20 Microscope Slides	48-6008-00
Box of 5 pcs. (1.5 kg/nt. wt.)		

Slide Storage Box

For microscope slides, made of plastic



- Storage box for microscope slides 76 x 26 mm
- Made of plastic, metallic grey color
- Lid with affixed index
- With division for safe storage

Minimum Purchase Quantity	Type	Cat. No.
1 piece	For 25 Microscope Slides	46-5086-00
	For 50 Microscope Slides	46-5091-00
	For 100 Microscope Slides	46-5096-00

Slide Storage Box

For microscope slides, made of wood



- Storage box for microscope slides 76 x 26 mm
- Frame made of wood, covered with black leatherette paper
- Teeth fitting with black numerical print
- Lid with affixed index

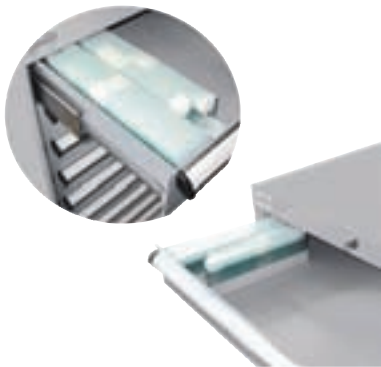
Minimum Purchase Quantity	Type	Cat. No.
1 piece (0.122 kg/nt. wt.)	For 25 Microscope Slides	46-5040-00
1 piece (0.233 kg/nt. wt.)	For 50 Microscope Slides	46-5041-00
1 piece (0.372 kg/nt. wt.)	For 100 Microscope Slides	46-5042-00

Filing System HISTO FILE

For safe storage of microscope slides or paraffin blocks



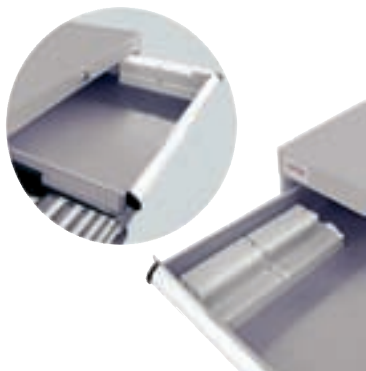
- This versatile filing system offers optimal storage for microscope slides and paraffin blocks away from dust. Thermoplastic trays are detachable for presorting at the workplace and for storage of microscope slides and paraffin blocks within the drawers.
- The perfectly processed filing cabinets are made of high quality sheet metal and equipped with a central locking system and a drawer barrier, which allows only one drawer to be open at a time.
- The aluminium handle bars are furnished with protective caps, paper and cellulose strips for labelling.
- The solid construction allows for another fully equipped cabinet to be stacked on top of another cabinet. The cabinets have connective holes for assembling as standard.
- Varnished in RAL 7035 (light grey). A wide range of RAL colors is available upon request.
- Paraffin block filing cabinets can be equipped as combination for mutual storage of microscope slides and paraffin blocks.
- Drawers with drawer runners are 100% extractable and can carry up to 200 kg each.
- Because of different drawer heights for paraffin block and microscope slide filing cabinets, an optimal exploitation for the designated divisions is reached.
- Trays for microscope slides and paraffin blocks are available as accessories (please see below).
- With a lock at the head of the filing system, the whole cabinet can be closed.



SLIDE FILE Microscope Slide Filing System

- Several sizes are available, from 71,000 slides up to 219,600 slides capacity
- For safe archiving of microscope slides size 76 x 26 mm
- Effective height of each drawer: 85 mm
- All cabinets are 750 mm deep

We are looking forward to making you an individual offer.



BLOCK FILE Paraffin Block Filing System

- Several sizes are available, from 19,000 blocks up to 51,500 blocks capacity
- For safe archiving of paraffin blocks
- Effective height of each drawer: 105 mm
- The height allows storing of two layers of paraffin blocks within one drawer
- All cabinets are 750 mm deep

We are looking forward to making you an individual offer.

Trays for Filing System HISTO FILE



- Universal tray for filing system HISTO FILE
- SLIDE FILE: for ca. 488 microscope slides
- BLOCK FILE: for ca. 66 paraffin blocks
- Dimensions (W/D/H): 67 x 300 x 40 mm
- Color: light gray

Minimum Purchase Quantity	Type	Cat. No.
1 piece	Universal Tray	47-5510-00

Filing Cabinet System MICROGLASS/MICROBLOCK

For microscope slides and paraffin blocks, Made in EU

Slide Filing Cabinet MICROGLASS, stackable



- Slide cabinet for storage
- Consisting of 14 individual sliding drawers
- Each drawer accommodates approx. 400 pcs. of 25.4 x 76.2 mm slides
- White powder coated metal
- Dimensions (W/D/H): 485 x 480 x 91 mm

Minimum Purchase Quantity	Type	Cat. No.
1 piece (9.6 kg/nt. wt.)	MICROGLASS	47-5105-00

Paraffin Block Filing Cabinet MICROBLOCK, stackable



- Block cabinet for storage
- Consisting of 14 individual sliding drawers
- Each drawer accommodates approx. 62 pcs. of embedding cassettes
- White powder coated metal
- Dimensions (W/D/H): 485 x 480 x 91 mm

Minimum Purchase Quantity	Type	Cat. No.
1 piece (7.4 kg/nt. wt.)	MICROBLOCK	47-5100-00

Lid for Filing Cabinet



- Lid for slide or block filing system
- White powder coated metal
- Dimensions (W/D/H): 485 x 480 x 26 mm

Minimum Purchase Quantity	Type	Cat. No.
1 piece (1.9 kg/nt. wt.)	Lid	47-5101-00

Base for Filing Cabinet



- Base for slide or block filing system
- White powder coated metal
- Dimensions (W/D/H): 485 x 480 x 76 mm

Minimum Purchase Quantity	Type	Cat. No.
1 piece (1.7 kg/nt. wt.)	Base	47-5102-00

Separation Spring for Filing Cabinet MICROGLASS



- Spring to hold slides 76 x 26 mm

Minimum Purchase Quantity	Type	Cat. No.
1 piece (0.16 kg/nt. wt.)	Separation Spring for MICROGLASS	47-5113-00

SureThin® Processor

For preparation of SureThin® LBC



SureThin® is an effective and accurate liquid based technique that is easy to use and produces highly diagnostic LBC results.

The sample vial is placed in the **SureThin®** Processor. By using rotation in the next step, the cell material is separated, and then pressed onto a filter by vacuum process. This filter has a special membrane to collect the diagnostically relevant cell material.

Excess fluid in the filter is aspirated. Next, the cells collected on the filter membrane are stamped on a microscope slide, in a 20 mm Ø. The slide is automatically disposed into a fixative solution.

The compact size makes the **SureThin®** Processor a great help in the modern cytology laboratory.

Technical Data:

SureThin® Processor:	Dimensions overall (W/D/H):	510 x 510 x 340 mm
Cat. No. 93-1000-00	Dimensions waste bottle (W/D/H):	150 x 430 x 150 mm
	Weight:	50 kg
	Power supply:	240V / 50Hz / 200VA

Standard Gyn-Kits



SureThin® Gyn-Kit 1:
Cat. No. 90-1400-00

- 500 sample vials
- 500 microscope slides
- 500 filters
- 500 Zytobrush Plus brushes

SureThin® Gyn-Kit 2:
Cat. No. 90-1410-00

- 100 sample vials
- 100 microscope slides
- 100 filters
- 100 Zytobrush Plus brushes

SureThin® Sample Vials



- Sample vials for tissue samples, prefilled with **SureThin®** fixative solution
- For gyn and non-gyn purposes

Minimum Purchase Quantity	Type	Cat. No.
1 box Box of 25 pcs.	SureThin® Sample Vials	90-1429-02

SureThin® Filters

For different applications

- #1: Gyn filter, pink
- #2: NON-Gyn filter, blue
- #3: Urine filter, yellow



Minimum Purchase Quantity	Type	Cat. No.
1 box Box of 100 pcs.	SureThin® Gyn Filter	90-1425-00
	SureThin® Non-Gyn Filter	90-1425-01
	SureThin® Urine Filter	90-1426-00

SureThin® Solutions

- **SureThin®** Fixative solution for gyn applications
- **SureThin®** Lysis solution for NON-Gyn applications



Minimum Purchase Quantity	Type	Cat. No.
1 bottle Bottle of 926 ml	SureThin® Fixative Solution	90-1437-00
	SureThin® Lysis Solution	90-1631-00

SureThin® Microscope Slides

- Microscope slides with white circle marking
- Optimized for use in the **SureThin®** Processor



Minimum Purchase Quantity	Type	Cat. No.
1 box Box of 50 pcs.	SureThin® Microscope Slides	90-1428-01

SAFEPREP® Gyn-Kits

For 480 stained monolayers

**SAFEPREP® Gyn-Kit 1: With sample vials and Zytobrush Plus**

Art.-Nr. 90-1350-00

4 x 480 ml density reagent
 1 bottle of 480 ml Hematoxyline
 1 bottle of 480 ml OG/EA Stain
 480 pipette tips
 480 settling chambers
 480 syringes
 480 coated microscope slides
 480 centrifuge tubes
 2 x Box of 96 aspiration tips
 500 sample vials
 500 Zytobrush Plus

SAFEPREP® Gyn-Kit 2: Without sample vials and Zytobrush Plus

Cat. No. 90-1360-00

4 x 480 ml density reagent
 1 bottle of 480 ml Hematoxyline
 1 bottle 480 ml OG/EA Stain
 480 pipette tips
 480 settling chambers
 480 syringes
 480 coated microscope slides
 480 centrifuge tubes
 192 aspiration tips

SAFEPREP® Sample Vials

- Sample vials prefilled with ethanol based fixative solution
- Mailable, not classified as dangerous goods

*Minimum Purchase Quantity*

1 box

Size

50 Pack

500 Pack

Cat. No.

90-1540-00

90-1541-00

SAFEPREP® Density Reagent

- Density reagent for determination of cell components
- Embeds components according to their density in layers in the fluid

*Minimum Purchase Quantity*

1 bottle

Bottle of 480 ml

Type

Density Reagent

Cat. No.

90-1550-00

SAFEPREP® Microscope Slides

- Special coated slides
- For Liquid Based Cytology compounds



Minimum Purchase Quantity	Type	Cat. No.
1 box Box of 70 pcs.	SAFEPREP® Slides	90-0535-00

Cytology Staining Sets

For SAFEPREP® test kits

- Modified staining set
- Consisting of one bottle Hematoxyline and one bottle OG/EA stain (dangerous goods)



Minimum Purchase Quantity	Type	Cat. No.
1 set Bottle of 480 ml	Cytology Staining Set	90-1560-00

Buffered TRIS pH 8.0

- For buffering rinsing and washing solutions
- One small package is sufficient to produce 1 liter of buffered stock solution from purified water
- With this buffered solution, five 5-liter quantities of purified water (200 ml for 5 liters) can be buffered



Minimum Purchase Quantity	Type	Cat. No.
1 pack	Buffered TRIS	42-1570-00

SAFEPREP® Centrifuge Tubes

For different applications

- Centrifuge Tubes for density gradient separation with the SAFEPREP® system
- For use with the semi and fully automatic method SAFEPREP®



Minimum Purchase Quantity	Type	Cat. No.
1 bag Bag of 480 pcs.	Centrifuge Tubes	48-0550-00

SAFEPREP® Settling Chambers

With flanges



- Settling Chamber with flanges for use with the semi and fully automatic method
- For removing residues from cleaning and separation processes

Minimum Purchase Quantity	Type	Cat. No.
1 bag Bag of 240 pcs.	Settling Chambers	90-0530-01

SAFEPREP® Pipette Tips



- Pipette tips for the semi and fully automatic method
- For preparation of **SAFEPREP®** compounds with the **SAFEPREP®** system: Transfer of cell solutions
- Volume: 101 - 1,250 µl

Minimum Purchase Quantity	Type	Cat. No.
1 box Box of 96 pcs.	Pipette Tips	48-0500-00

SAFEPREP® Aspiration Tips



- Aspiration tips for the fully automatic method
- For aspiration of centrifuge residues
- Volume: 1 - 200 µl

Minimum Purchase Quantity	Type	Cat. No.
1 bag Bag of 1,000 pcs.	Aspiration Tips	48-0510-00

Pipette Syringes for SAFEPREP®

- For the automatic sample preparation out of **SAFEPREP®** vials



Minimum Purchase Quantity	Type	Cat. No.
1 bag Bag of 240 pcs.	Syringes for SAFEPREP®	90-0520-00

Cleaning Compound decon 90®

© registered trademark of decon Deutsche Energie-Consult GmbH

- Highly concentrated cleaning compound
- Phosphate free and biodegradable
- Useful for all cleaning purposes, esp. decontamination
- Not classified as dangerous good

*Minimum Purchase Quantity*

1 can
Can of 1 l

Type

Cleaning Compound
decon 90®

Cat. No.

40-9001-00

Rovers® Cervex-Brush® Combi

© registered trademark of ROVERS MEDICAL DEVICES B.V.

CE MP

- Extraction of all needed cell material in just one movement
- Due to the combination with the endocervix sampler, Rovers® Cervex Brush® Combi is suitable for extracting endocervical and exocervical cells both at the same time
- Cells are extracted in a gentle way, which prevents injuries and results in a perfect, easy-to-read PAP test

*Minimum Purchase Quantity*

1 pack
Pack of 25 pcs. (0.57 kg/gr. wt.)

Type

Rovers® Cervex-Brush®
Combi

Cat. No.

46-0500-00

Zytobrush Plus

PAP test instrument with plastic rail

CE MP

- Extraction of the required cell material completely in one movement
- With the flexible bristles, the Zytobrush Plus is suitable for every cervix shape
- Easy removal of the brush head with a plastic rail
- Non-sterile packing
- Length: 21 cm

*Minimum Purchase Quantity*

1 pack
Pack of 50 pcs.

Type

Zytobrush Plus

Cat. No.

92-0300-00

Gyn-Brush

PAP test instrument

- PAP test brush for preventative check-up
- Length approx. 20 cm

*Minimum Purchase Quantity*

1 pack
Pack of 100 pcs.

Type

Gyn-Brush

Cat. No.

46-0710-00

Gyn-Brush Plus

PAP test instrument

- PAP test brush with safety tip
- Length approx. 20 cm

*Minimum Purchase Quantity*

1 pack
Pack of 100 pcs.

Type

Gyn-Brush Plus

Cat. No.

46-0720-00

Gyn-Brush conical

PAP test instrument

- Conic shaped PAP test brush for preventive check-up
- Length approx. 20 cm

*Minimum Purchase Quantity*

1 pack
Pack of 100 pcs.

Type

Gyn-Brush conical

Cat. No.

92-0711-00

Gyn-Brush Plus conical

PAP test instrument

- Conic shaped PAP test brush with safety tip
- Length approx. 20 cm

*Minimum Purchase Quantity*

1 pack
Pack of 100 pcs.

Type

Gyn-Brush Plus conical

Cat. No.

92-0721-00

Gyn-Brush Combi

PAP test instrument

- Gynaecological PAP test brush for preventative check-up
- Combined with plastic Eyre scoop
- Length approx. 24 cm

*Minimum Purchase Quantity*

1 pack
Pack of 100 pcs.

Type

Gyn-Brush Combi

Cat. No.

92-0210-00

Eyrespatel F®

PAP test instrument

© registered trademark of Heinz Herenz Medizinalbedarf GmbH

- Wooden spatula for PAP testing
- Finger-shaped



Minimum Purchase Quantity	Type	Cat. No.
1 box Box of 1,000 pcs.	Eyrespatel F®	46-0740-00

PapCone®

PAP test instrument

© registered trademark of Otto Bock Kunststoff GmbH

- Instrument with sponge head for profound intra-cervical cell collection and swab at the transformation zone of the cervix for a cytologic examination
- Thanks to the characteristic of the surface, the PapCone® works like a brush in the cervical canal, catching the complete surface of the cervical canal without tearing out cells out of the depth
- Perfect for gently streaking the cells onto a microscope slide
- Consisting of a plastic handle with base and sponge head
- With breakneck groove for separate disposable of handle and head

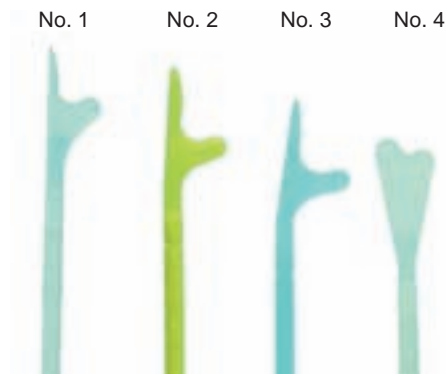


Minimum Purchase Quantity	Type	Cat. No.
1 pack Pack of 25 pcs.	PapCone®	46-0600-00

Szalay Spatula

PAP test instrument

- Four spatula types with breakneck grooves for different portio shapes and sizes
- With just one swab enough representative cell material can be gained from all zones (ecto and endo cervix, transformation zone)
- Reliable results in the conventional as well as the liquid based method
- Length: 220 mm
- Thickness: 5 mm



Minimum Purchase Quantity	Type	Cat. No.
1 pack Pack of 100 pcs.	No. 1, transparent	48-0251-00
	No. 2, yellow	48-0252-00
	No. 3, blue	48-0253-00
	No. 4, transparent	48-0254-00

Sprayfix

Fixative

- Fixation medium for cytological smear
- Clear of propellant, non-polluting
- Soluble in alcohol and water
- Content of one bottle is sufficient for approx. 1,000 to 1,500 smears



Minimum Purchase Quantity	Size	Cat. No.
36 bottles 1 box of 36 bottles (1 bottle of 0.2 kg/nt. wt.)	200 ml	41-2010-00

§ 1 Validity of terms and conditions

Only our terms and conditions apply. Contractor's acknowledgements referring to his own terms and conditions are hereby rejected. Variations of this terms and conditions or acceptance of contrary terms and conditions require our explicit acknowledgement in text form.

In case of invalidity of single paragraphs, all further parts of the contract are obligatory, unless the obligation to the contract would mean an unacceptable disadvantage for one contractor.

When using INCOTERMS, the version of 2010 applies.

§ 2 Conclusion of contract

All our offers shall be understood as invitation for contract formation without binding. A purchase agreement is only formed when the purchasing partner receives an order acknowledgement in text form or when deliverance according to these terms and conditions takes place.

Oral agreements require our acknowledgement in text form to become obligatory.

After conclusion of contract, the purchaser has to provide all information concerning his order that is necessary for us to make a reliable schedule. Insofar, the purchaser is liable to input deliverance.

Drawings, samples, drafts, design drawings and such remain our property and are not allowed to be used for different intentions or made open to business competitors without particular permission.

§ 3 Prices

Unless nothing to the contrary is agreed in writing, all prices are valid ex works excluding packaging.

We reserve the right to raise the prices due to changes in wages, material costs or tax rises, if the agreed or actual time of delivery is more than four months (one month on trade businesses). If that raise is more than 10%, the purchasing partner is allowed to rescind from the contract if the goods have not been accepted yet.

If shipping the goods has been agreed upon, the delivery within Germany and Austria is free of packing and shipping charges up from a value of 250.00 Euro. For deliveries with lower value we generally charge 9.50 Euro as partial packing and shipping charges. For deliveries abroad, the freight and accompanying charges at the time of delivery are valid. All prices are valid plus VAT.

§ 4 Delivery and transfer of risks

Delivery times only apply as fixed dates if they were particularly confirmed in text form. Our obligation to supply is ceased until every prior obligation of the purchaser is fulfilled. Same applies to approval of drawings.

The purchaser may claim his rights in case of performance delay only if he grants us an appropriate grace period, which has to be at least 30 days, unless it is dispensable according to the law.

We are eligible to partial delivery if this does not affect the purchaser inappropriately. The risk of loss, damage and costs is transferred to the purchaser by the time the seller places them packaged and ready for collection at the warehouse of MEDITE GmbH, Burgdorf, Wollenweberstrasse 12, Germany. According to our general terms of delivery Ex Works, the delivery resp. the performance is fulfilled with the allocation for collection. Henceforth, the purchaser has the right of disposition, power of disposition, and bears the risk.

As a basic principle, goods of an average kind and quality are owed unless otherwise particularly agreed in text form.

§ 5 Payment

If not otherwise determined, invoices have to be paid within ten days with 2% early payment discount, or 30 days net from date of invoice.

If we have reasonable doubt on a purchaser's financial solvency or his creditability, especially if he ceased his payment or a cheque is not cashed in, we are empowered to register securities or demand prepayment for pending deliveries without prejudice to other rights.

On first time orders, we are empowered to fulfil the order only against prepayment or cash on delivery.

We explicitly reserve the right not to accept cheques and exchanges. The acceptance always happens on account of payment. Discount and exchanging charges always go at the purchaser's expense and are due on receipt.

We are entitled to claim payment initially for prior liabilities, despite contrary terms of the purchaser. The purchaser will be informed. If costs and interests already accrued, we are entitled to claim the payment prior to costs, then to interests, and last to the purchaser's principal claim.

The calculation of interests goes according to § 288 BGB (German civil code), or in case of bilateral transaction, before the default occurs, according §§ 352, 353 HGB (code of commercial law). Given that the debtor is in default, we are entitled to charge a fine in the amount of 5.00 Euros for every further reminder notice.

Offset rights are only due to the purchaser, if his counterclaims were legally noticed, uncontended or acknowledged from us in text form.

§ 6 Quality, warranty of defects

To define the quality of a good, only the acceptance of order is representative; if it is missing, the quality is defined by quotation text.

If further to the offer clarifications are made by the purchaser, they only become a binding agreement to contractual quality when acknowledged by us in text form.

Drawings only define the contractual quality, if they are approved by the purchaser with his signing on the front side.

Contractually agreed are also variations of the described quality in equipment, shape and colour, as they may be stated in prospects or similar presentations or in offers where the quality is described. Presentation in prospects is always only approximately and under subject of alterations. The capability of goods for the intended use is not subject of the description of their quality. That is only the case if the intended use is described in the instruction manual or otherwise explicitly confirmed.

An attrition due to the nature of a good's quality and its component parts is not agreed to be a lack. This applies especially for cable links, gripping elements, vacuum exhausters, microscope slides, plastic jars (embrittlement, deformation) and for batteries for backup power supply. For further details, refer to the specific warrant of the device in question.

Any warranty expires if the good is changed further than an installation according to the state the art and installation information. Changes in construction and design are explicitly reserved. The customer is obliged to check the specifications stated in the order acknowledgement concerning their conclusiveness with reference to the intended use.

Obvious defects have to be indicated immediately in text form, at the latest ten days after receipt. If the defect emerges later on, the purchaser has to indicate it immediately after its recovery in text form to the salesperson. On bilateral transactions, §§ 377 ff. HGB (code of commercial law) applies.

If the good is already defect at the time of transfer of risks, we may within ten days either repair the good or deliver in addition after regaining the defect goods, due to the obligation of supplementary performance. The decision which action to take is on us.

Principally, the claim of additional delivery is considered to entail disproportionately great costs if the model has been changed by the supplier in the time between selling and emerging of the defect.

Warranty claims expire within one year after delivery. If the purchaser claims warranty with no sufficient qualification, may it be there is no defect or the defect does not qualify to claim warranty, the purchaser has to repay all of our incurred expenses.

§ 7 Reservation of proprietary rights

We reserve the right on all properties until all payment according to the contract is received. The reservation of proprietary rights on bilateral transactions applies until every claim on the customer is fulfilled that may accrue to us now or in the future. We are entitled to regain the goods immediately in case of repudiatory conduct, especially in case of default.

The purchaser is entitled to sell the goods in proper business transactions, as long as he is not in default. The purchaser resigns to us preventively in advance all the claims resulting from reselling the goods that are subject to retention of title resulting, or another legal basis, in their entirety.

The purchaser is authorized to collect the assigned claims under his own name for our account until cancelled or payment is ceased.

Goods that are subject to retention of title and the claims that take their position are not to be pawned or assigned for backup. On access of third parties, especially bailiffs, on reserved goods or assigned claims the purchaser is obliged to point out our rights and inform us immediately via registered letter about the access.

If the worth of the securities exceeds the claims more than 20%, we will release securities at own option upon request.

§ 8 Liability

Liability for simple negligence is ruled out, if not required by law. Any further liability for purpose and gross negligence remains. The liability on default is limited on 0.5% of order value per week; on the whole the liability is limited on a maximum of 10% of the order value. Furthermore, claims for compensation are limited on the compensation of attested additional costs (covering purchase on basis of three offers by comparison).

§ 9 Protection of models, contractual penalty for retailer

In case of bilateral transaction the purchaser is obliged to not recreate the products or have them recreated and sell them. In case of violation we have the right to claim contractual penalty. The amount of the claim for every recreated piece is 100% of the price of the respective article. Decisive is the valid price list at the time of violation. Our right for further damage claims stays unaffected hereof.

§ 10 Applicable law, Jurisdiction

Place of fulfilment for payment of the purchase price as well as other deliverables of the purchaser is always our registered office. Place of fulfilment for our deliverables is also our registered office.

Exclusive place of jurisdiction for all disputes arising out of or in connection with this contract shall be the seat of MEDITE GmbH relevant at the time.

This business conditions and all legal relationships shall be governed by the laws of the Federal Republic of Germany.

Effective 05/2017



MEDITE GmbH

Wollenweberstrasse 12

31303 Burgdorf

Germany

Tel. +49 (0) 51 36/88 84-0

Fax +49 (0) 51 36/88 84-55

info@medite.de • www.medite.de